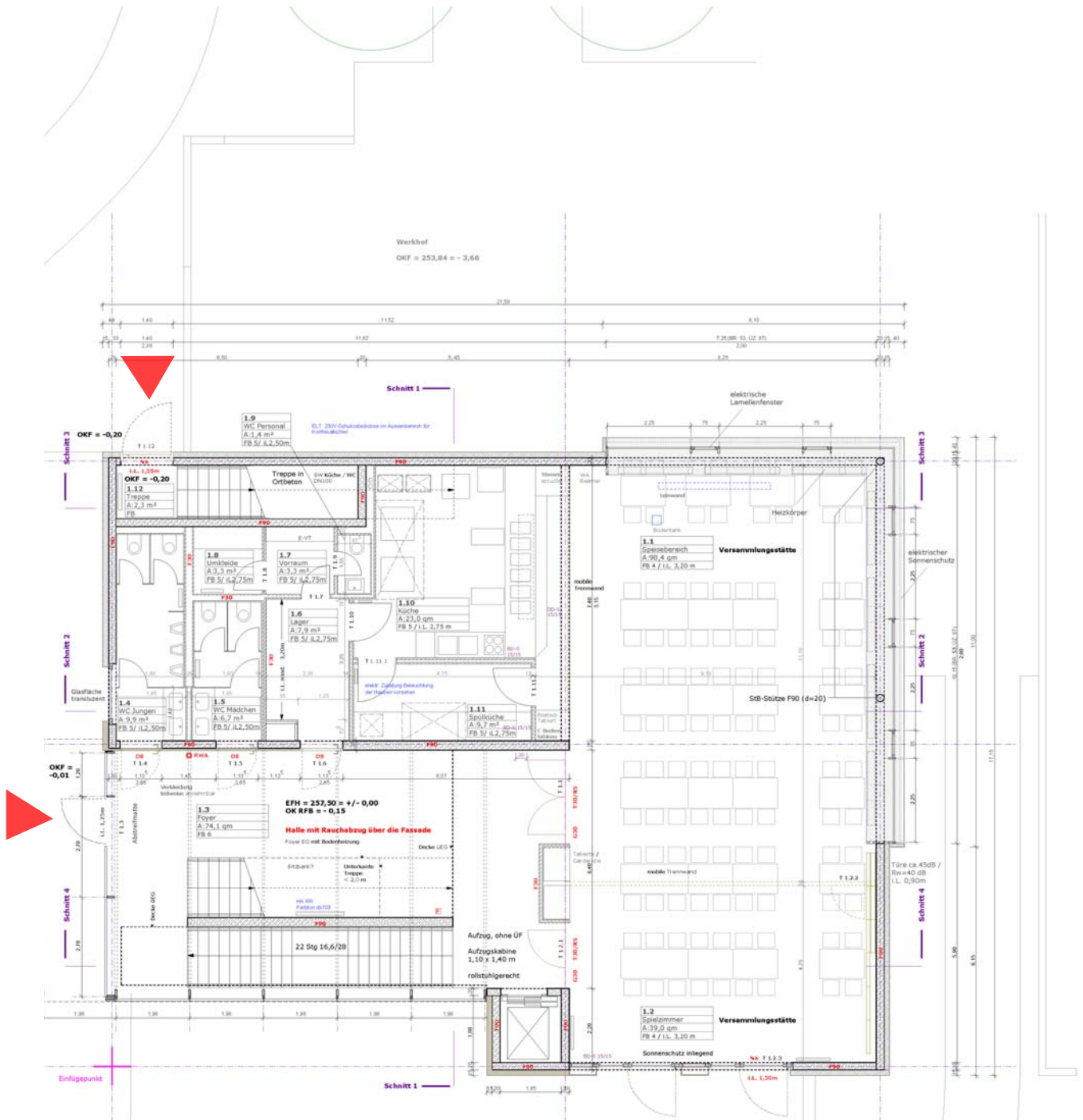
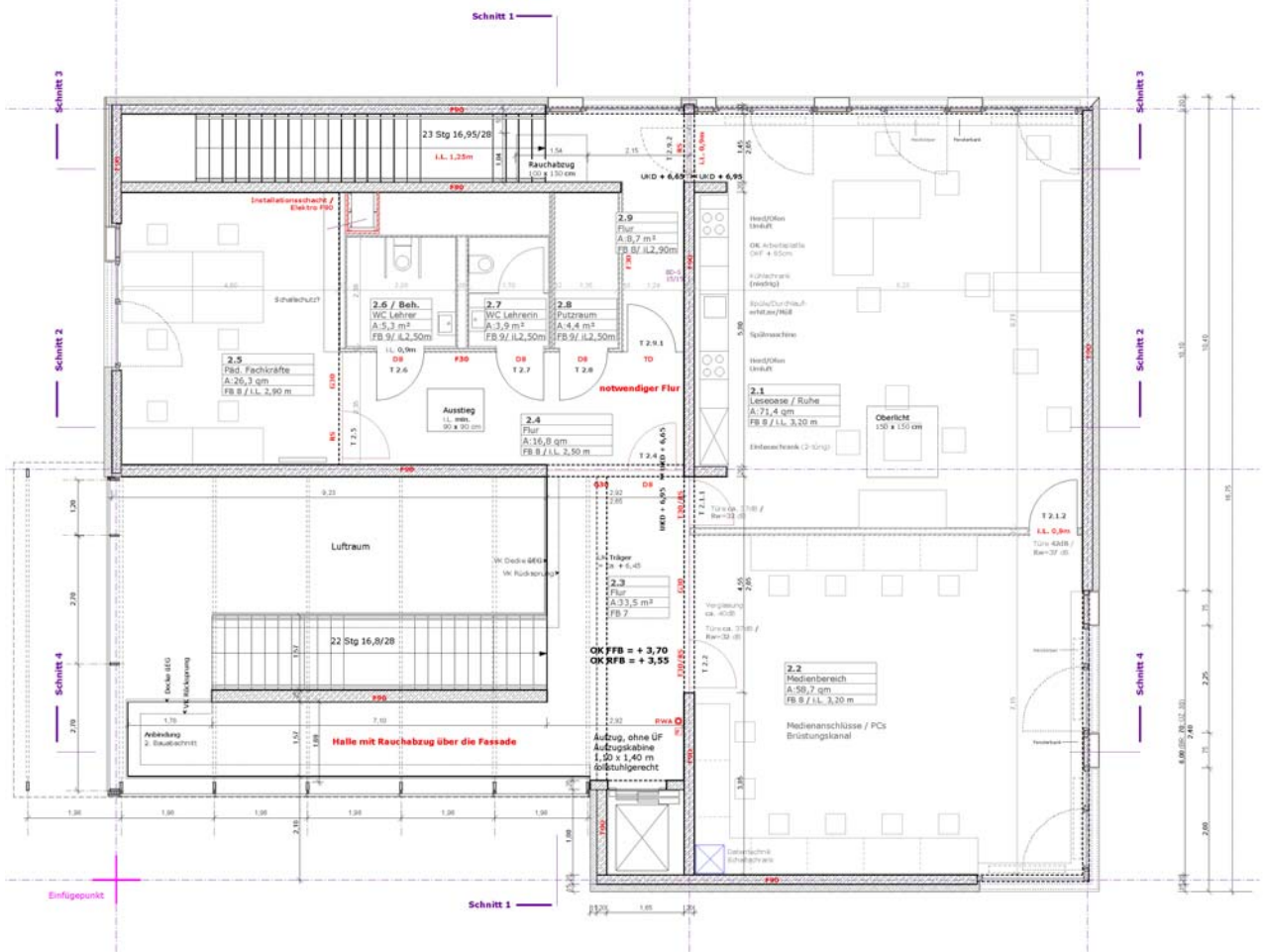


Lageplan 1. und 2. Bauabschnitt



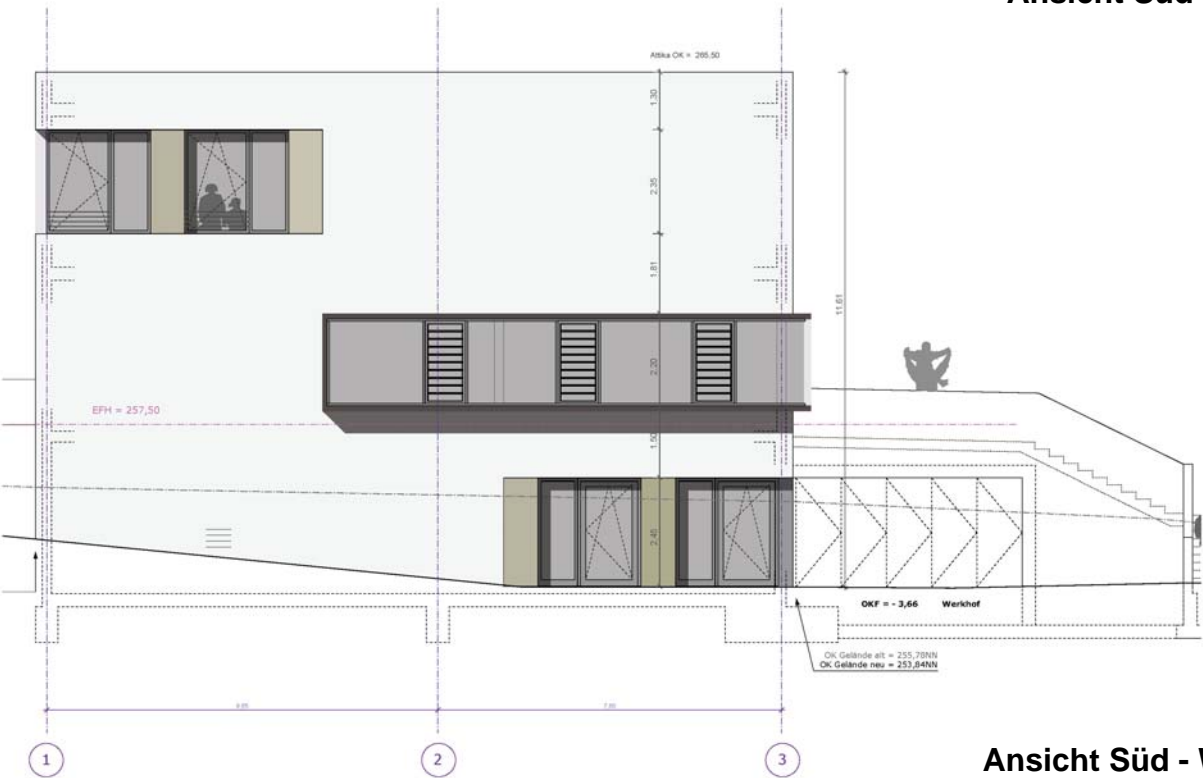
Grundriss Erdgeschoss



Grundriss Obergeschoss



Ansicht Süd - Ost



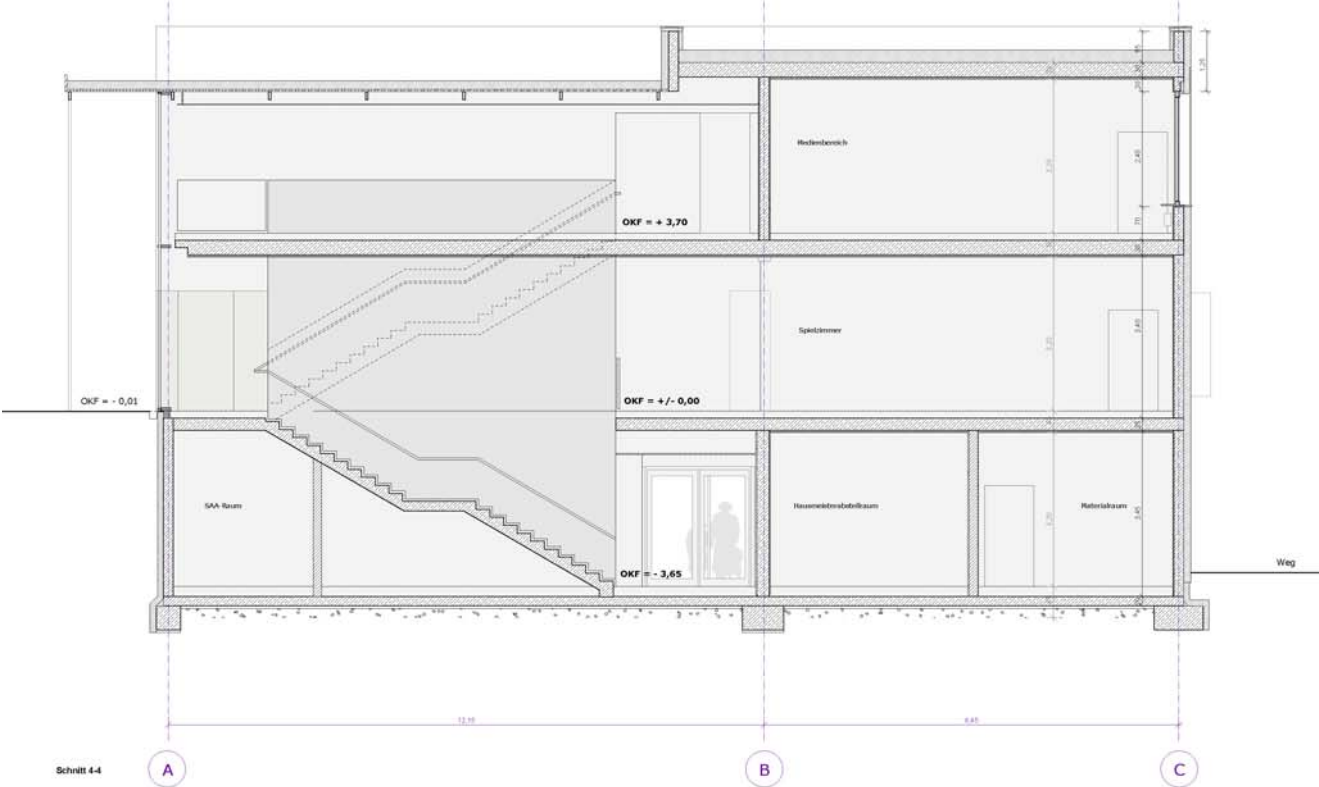
Ansicht Süd - West



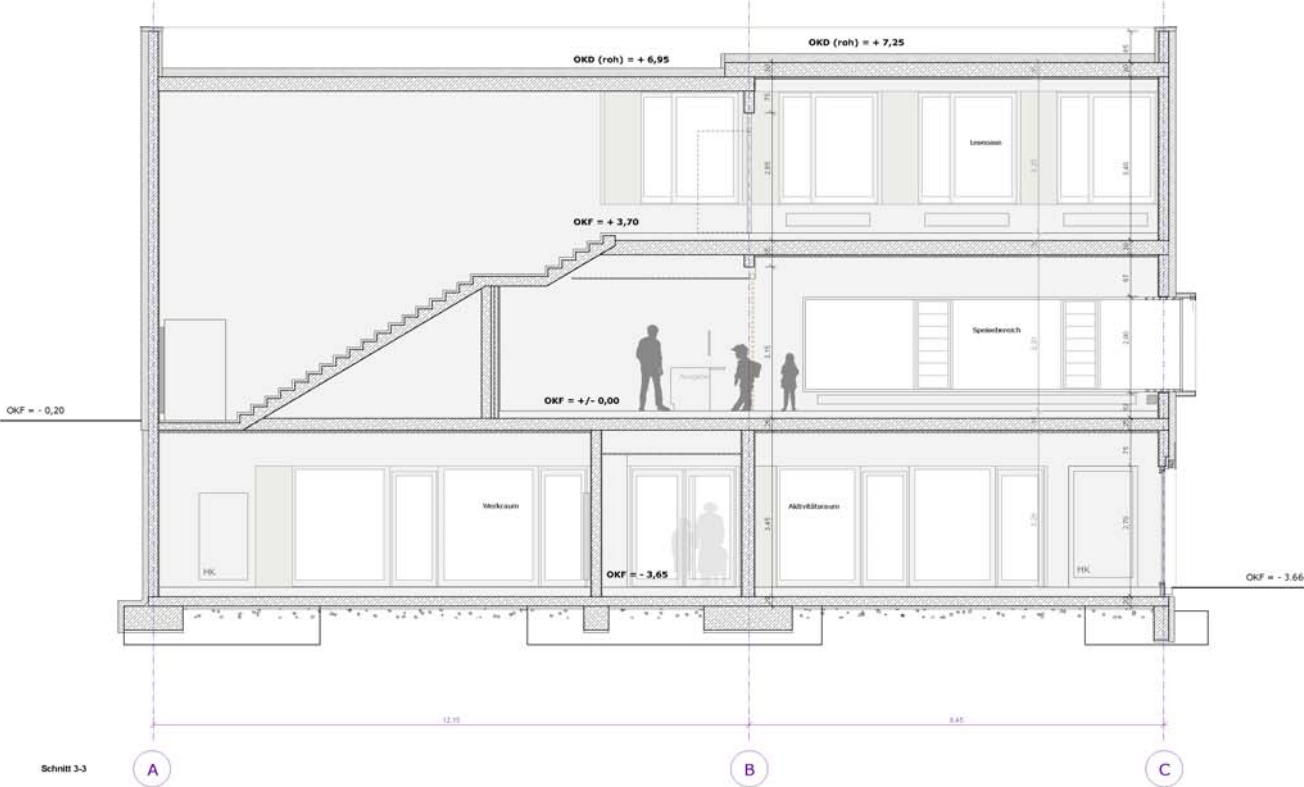
Ansicht Nord - West



Ansicht Nord - Ost



**Schnitt Foyer/
Ganztagesbereich**



**Schnitt Fluchttreppe/
Ganztagesbereich**