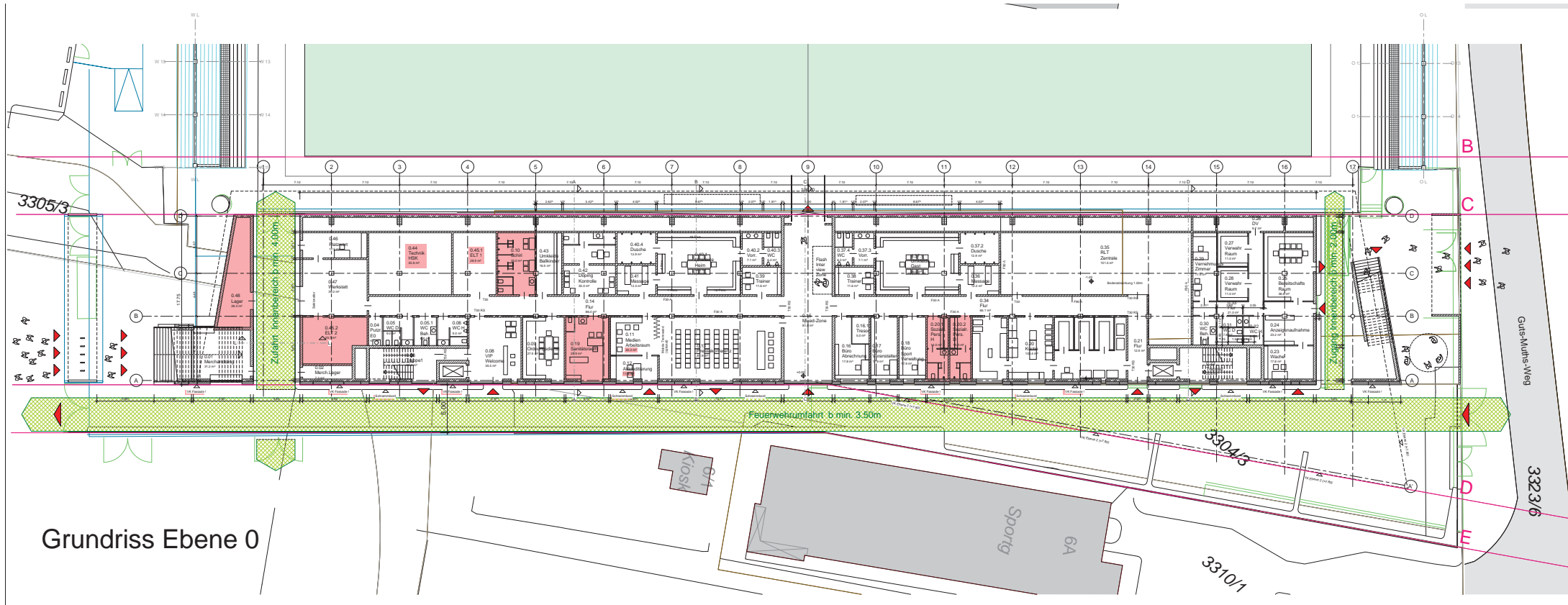
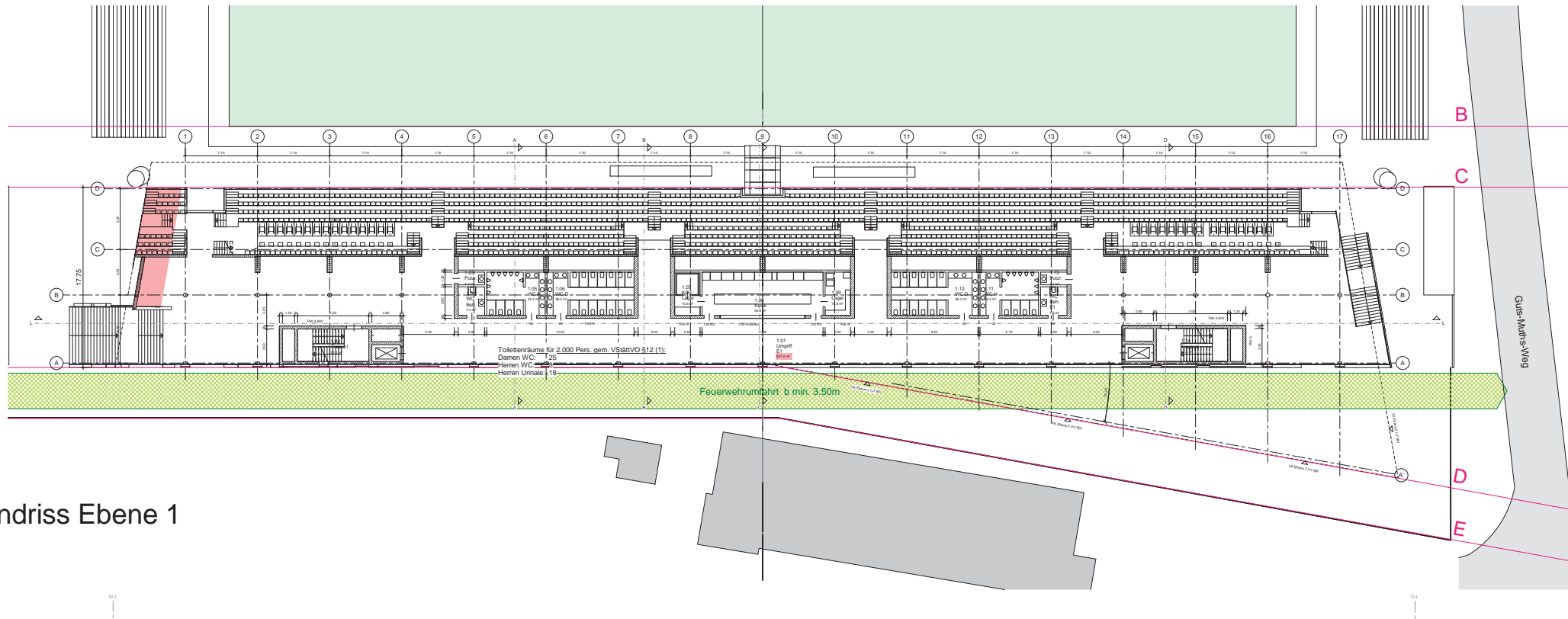


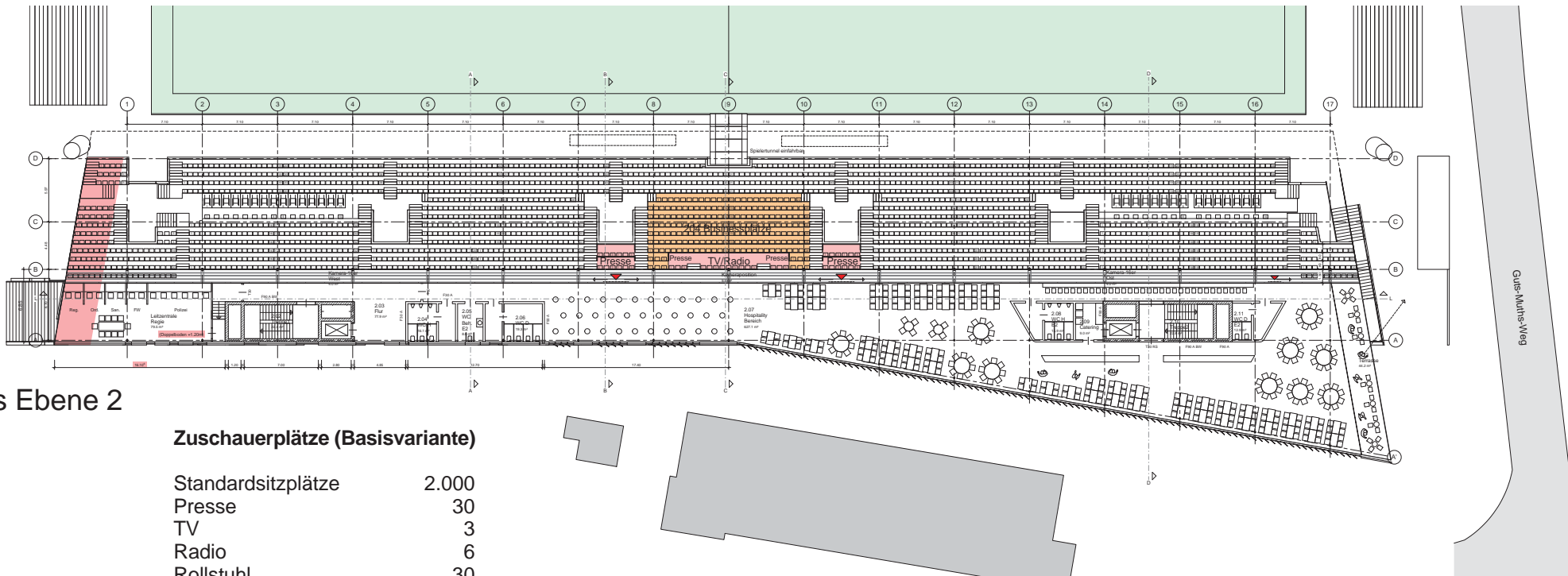
**Lageplan
Minimalausbau zentraler Platz**



Grundriss Ebene 0



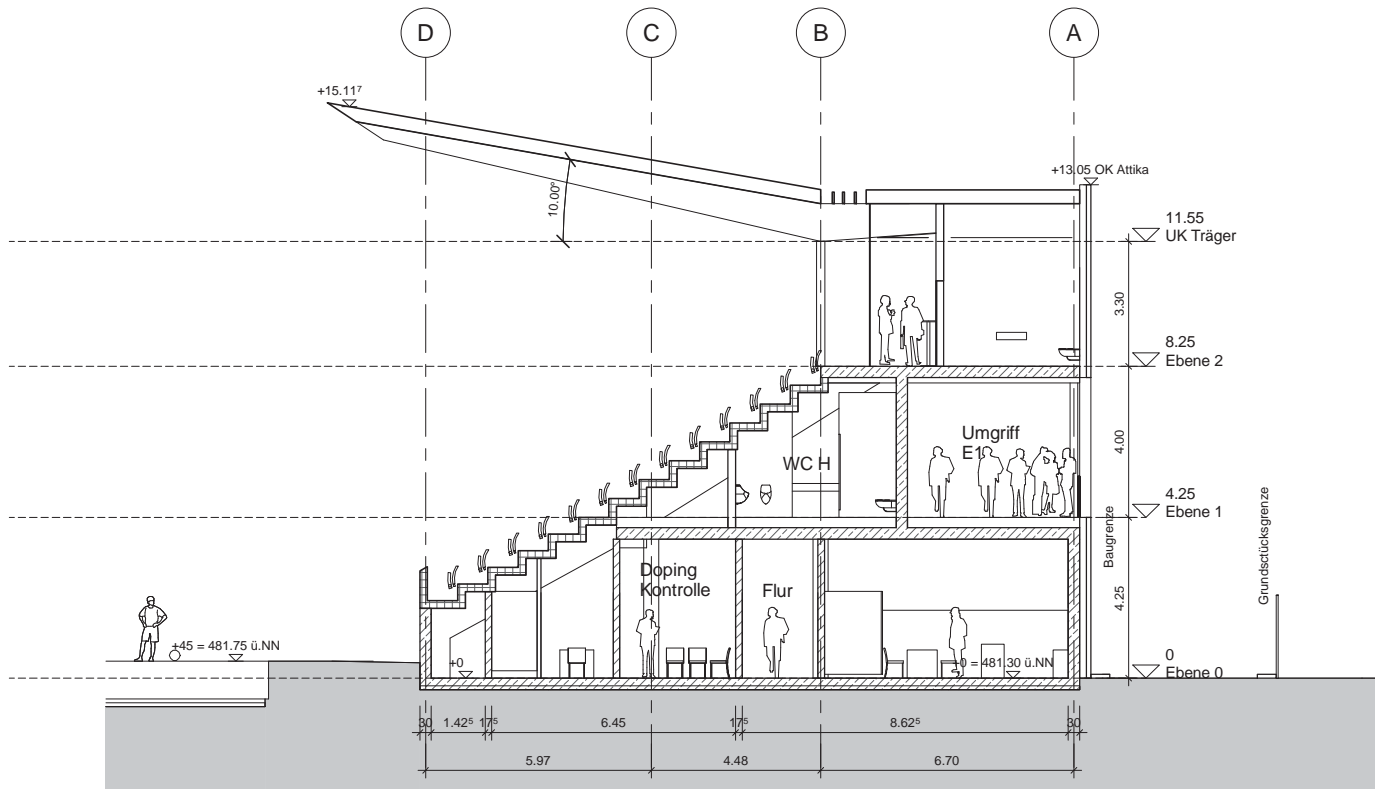
Grundriss Ebene 1



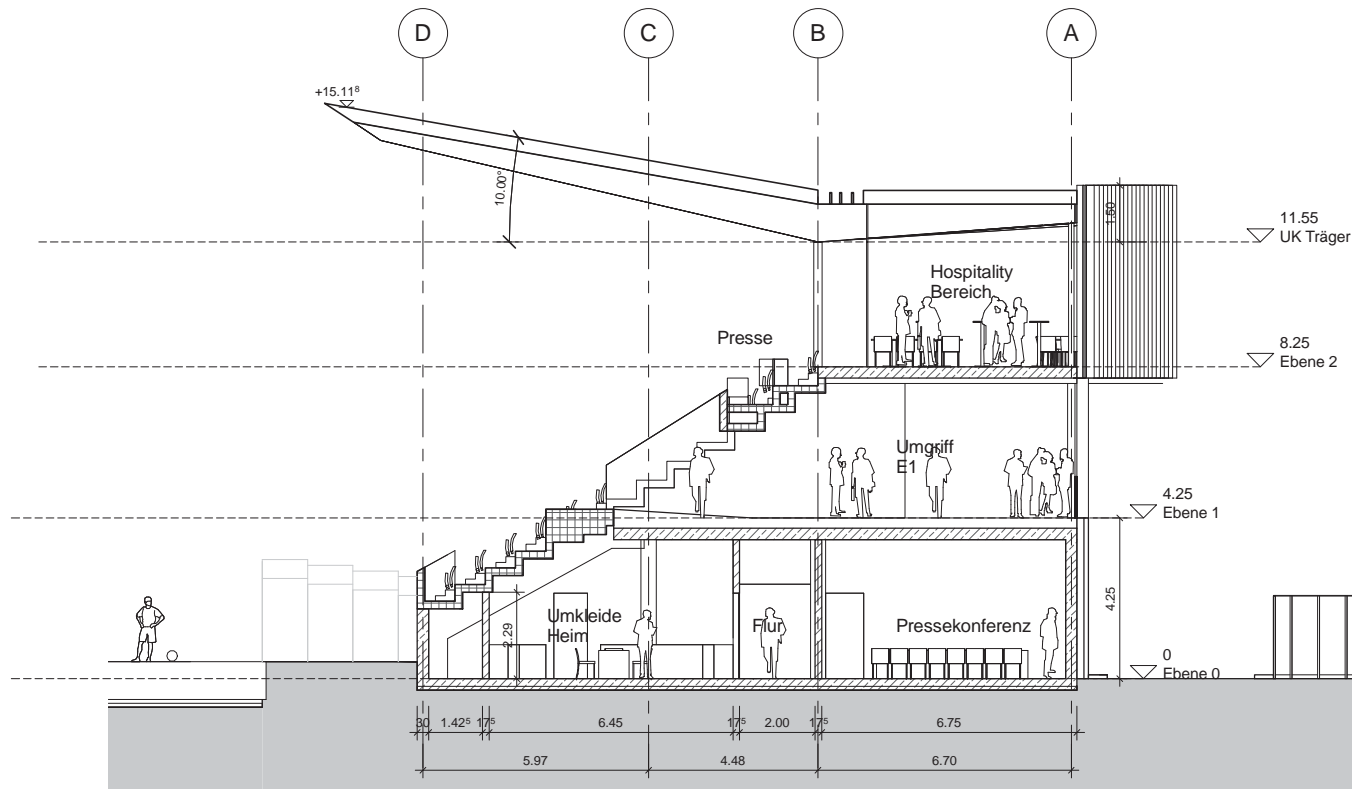
Grundriss Ebene 2

Zuschauerplätze (Basisvariante)

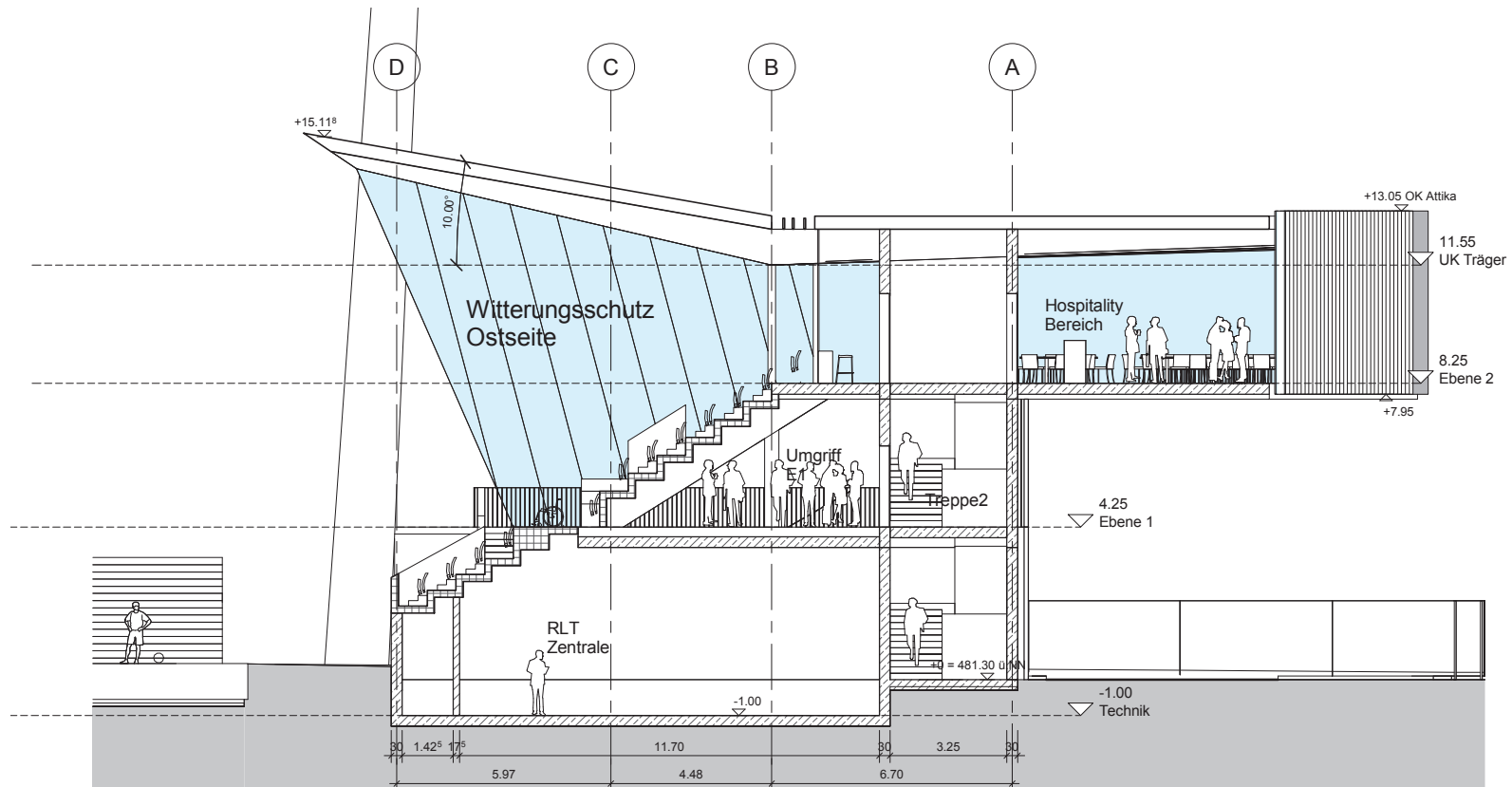
Standardsitzplätze	2.000
Presse	30
TV	3
Radio	6
Rollstuhl	30
Summe	2.069
+ Businessplätze	204
Gesamt	2.273



Schnitt A-A



Schnitt B-B



Schnitt D-D

