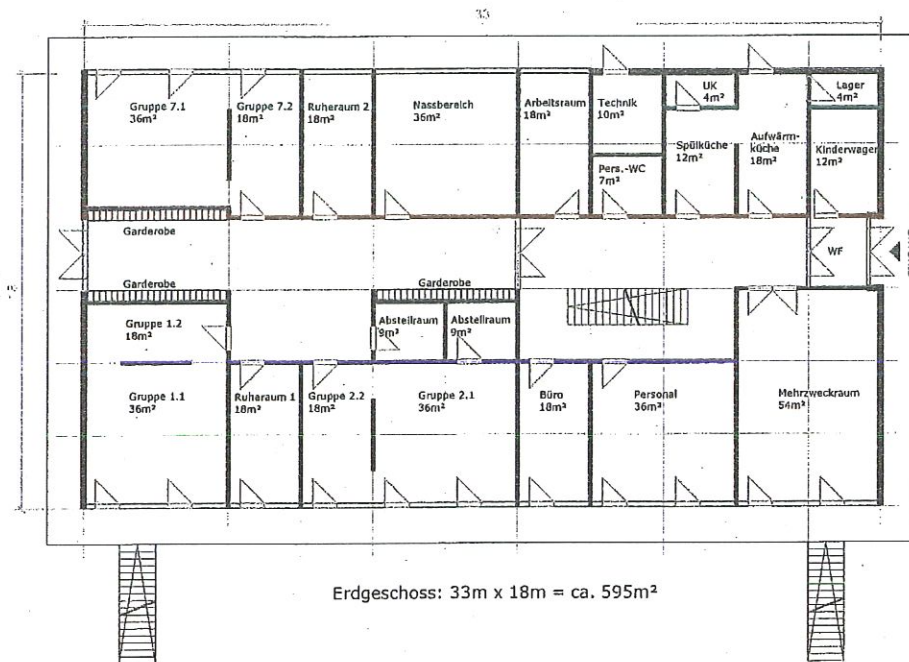
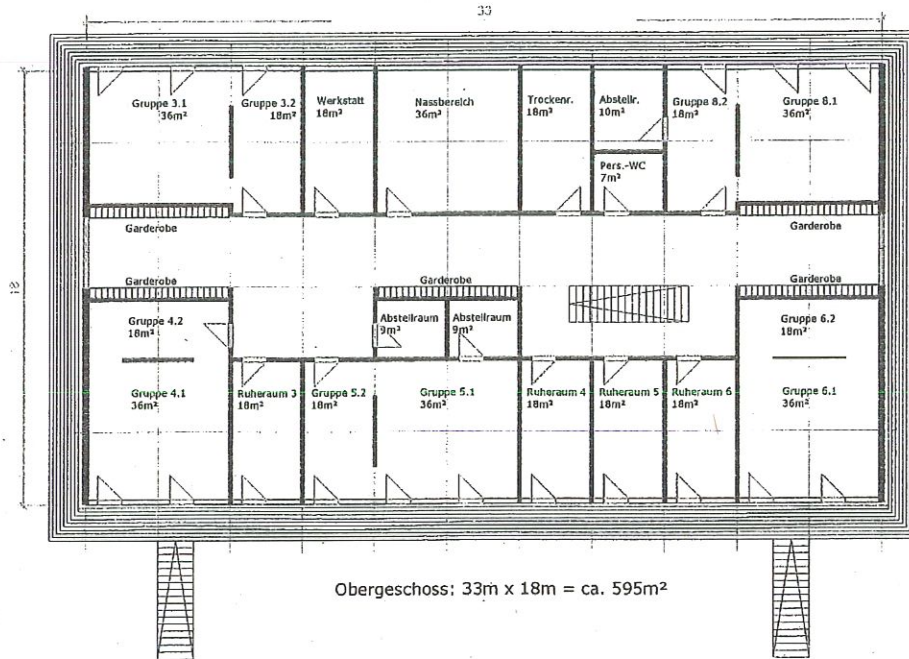


Kita Modulbau - TYP 1, M 1:250 (Variante A)
 8 Gruppen (max. 80 Krippenplätze), 2-geschossig, BGF: ca. 1190 m²



Kita Modulbau - TYP 2, M 1:250 (Variante A)
 5 Gruppen (max. 40 Krippenplätze), 2-geschossig, BGF: ca. 810 m²

