



Hallstraße

Krefelder Straße

Duisburger Straße

IV

8 Stellplätze

8 Stellplätze

6 Stellplätze

6 Stellplätze

3 Stellplätze

31 Stellplätze Gesamt
für Bestand und Kita

Grundstück Bestand
2250,1 m²

AUSSENBEREICH KINDERTAGESSTÄTTE

Außenfläche Brutto = 1063 m²
Dachterrasse = 105 m²
Summe = 1168 m²

Grundstück Kita
1809 m²

3,25

11,12*

BGF Kita: 644 m²

III

NEUBAU KINDERTAGESSTÄTTE

II

Dachterrasse

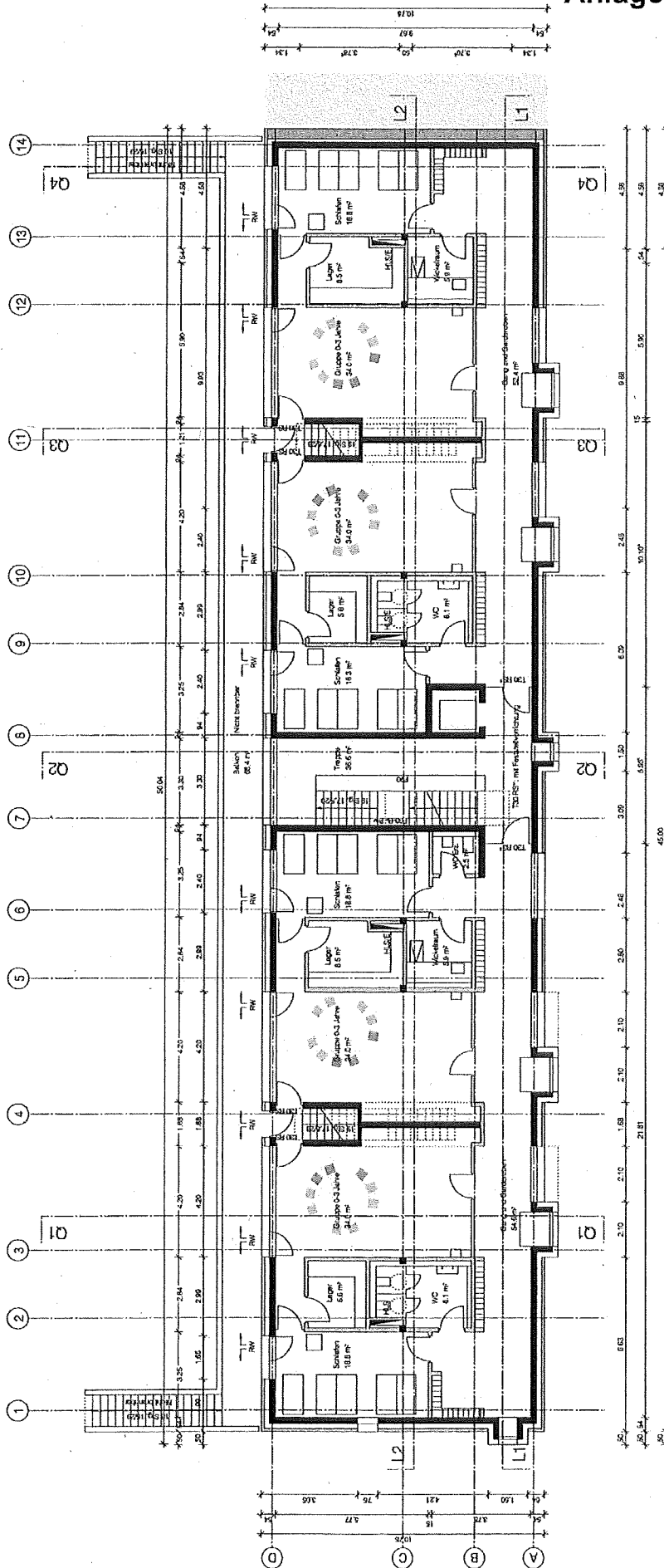
h Traufe = ca. 12,0 m

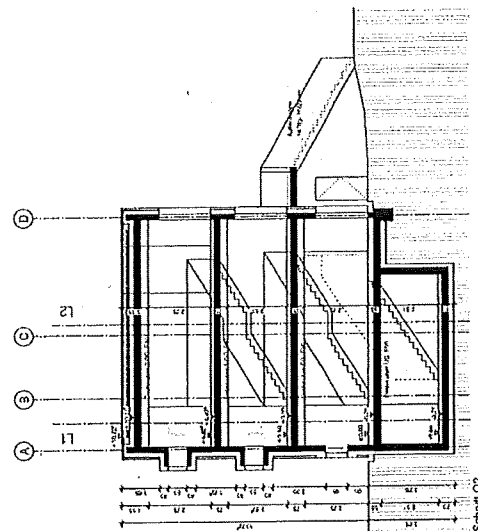
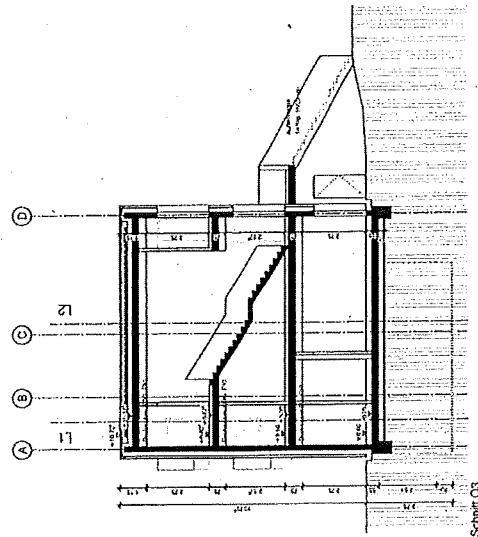
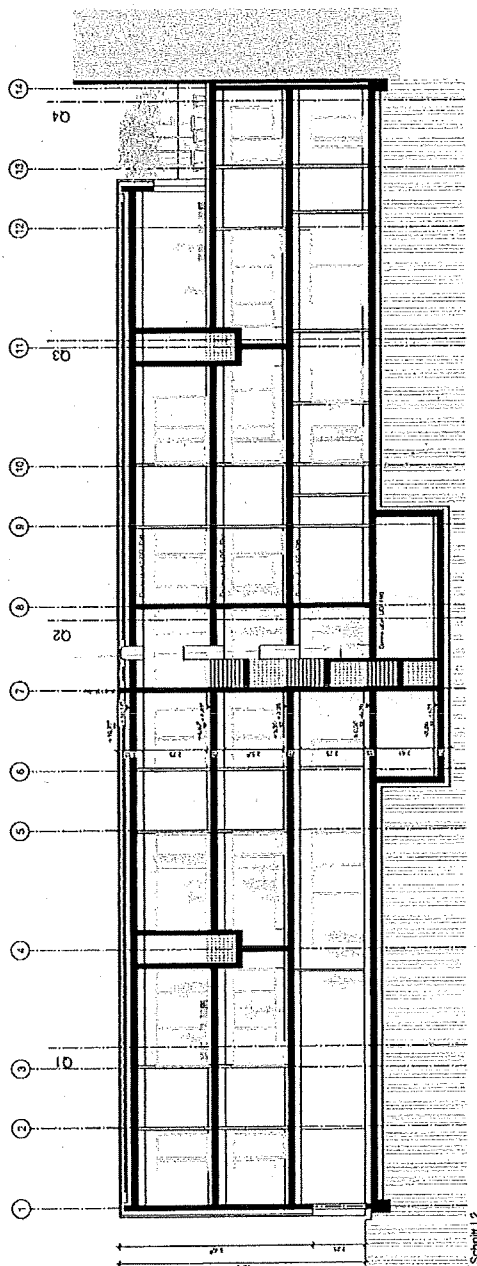
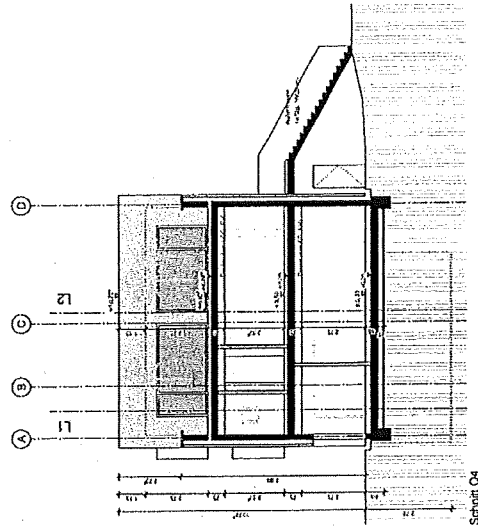
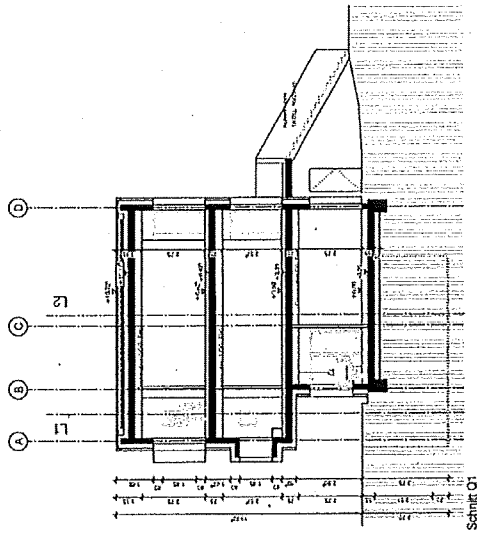
h Traufe = ca. 14,0 m

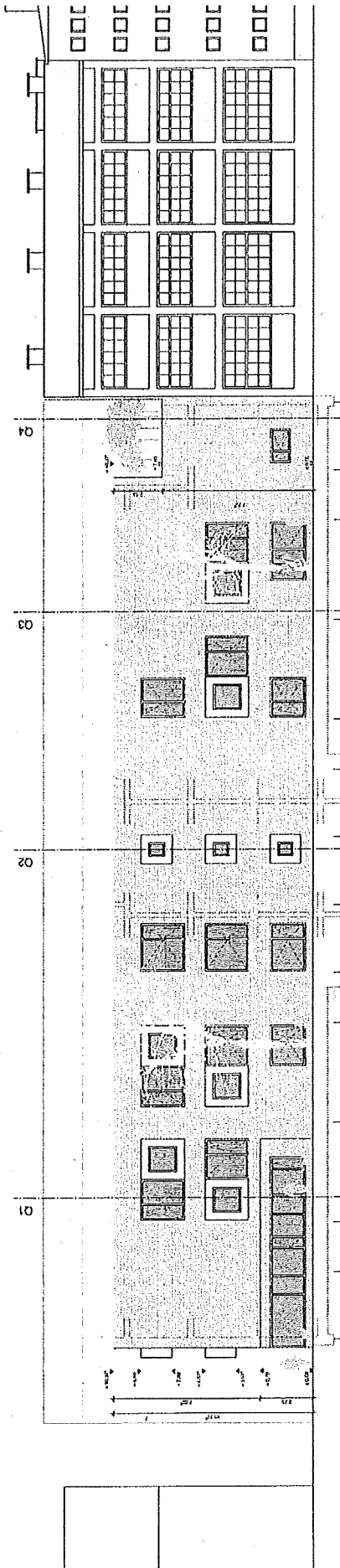
h Traufe = ca. 16,0 m

Zuflucht EG

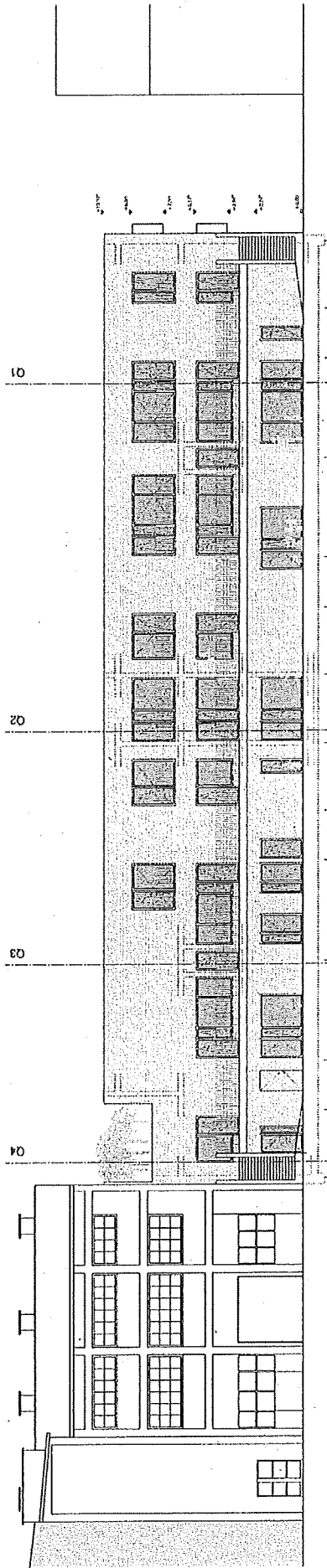
BGF Bestand: 1112 m²



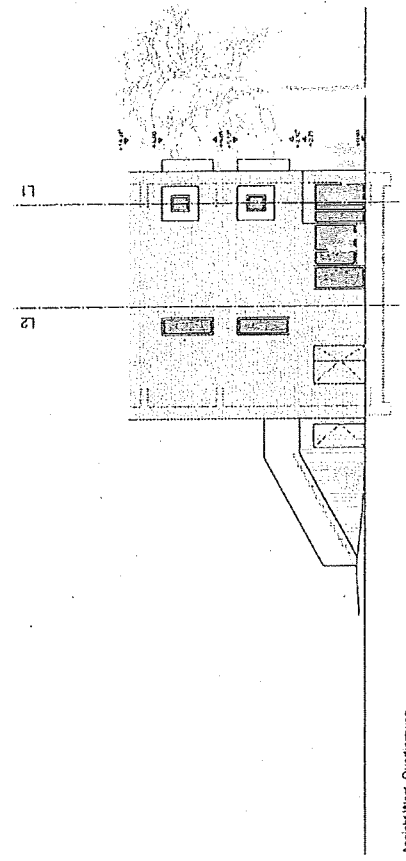




Ansicht Süd, Duisburger Straße



Ansicht Nord, Garten



Ansicht West, Quartiersweg