

ZOLL

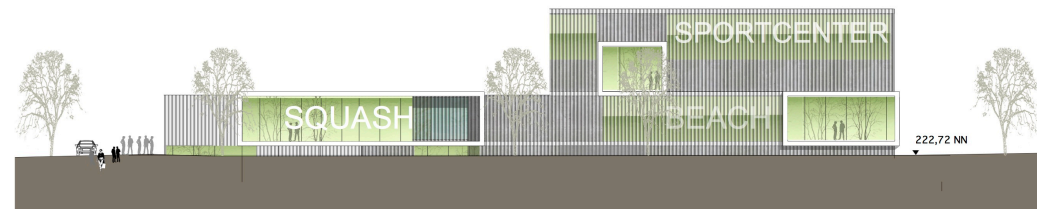
ARCHITEKTEN
STADTPLANER

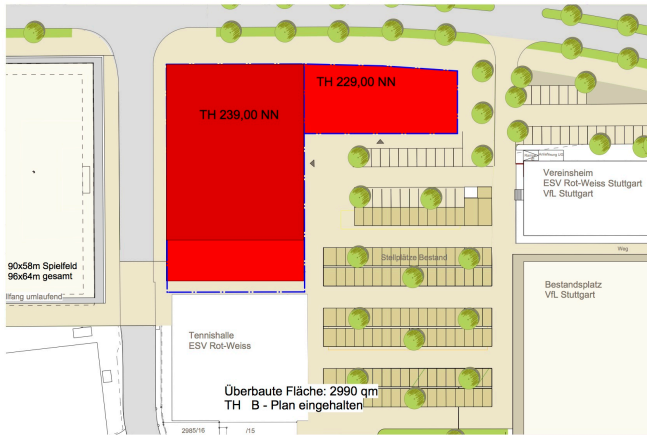
ZOLL ARCHITEKTEN
STADTPLANER GMBH
MARKELSHIMER STRASSE 60
70435 STUTTGART
FON +49 (0)711 870 5120
FAX +49 (0)711 870 512 10
ZOLL-ARCHITEKTEN.DE
MAIL@ZOLL-ARCHITEKTEN.DE

19.03.2018

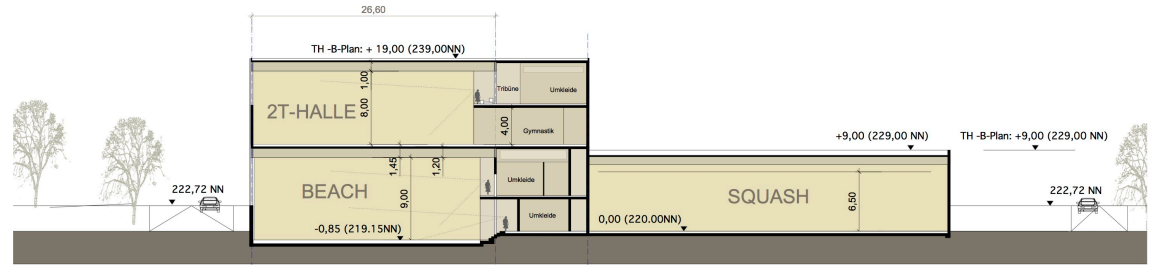
Stadt Stuttgart Amt für Sport und Bewegung

Machbarkeitsstudie Q22 Zweiteilbare Sporthalle mit
Beachvolleyball- und Judotrainingstützpunkt im Neckarpark

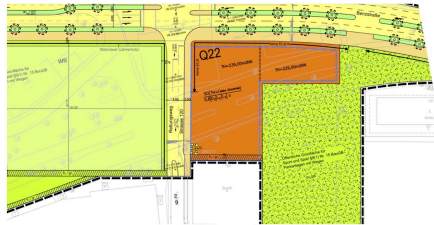




Lageplan 1:500

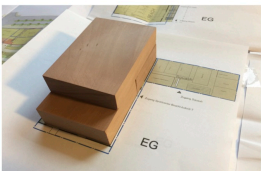


Längsschnitt B-B 1:200

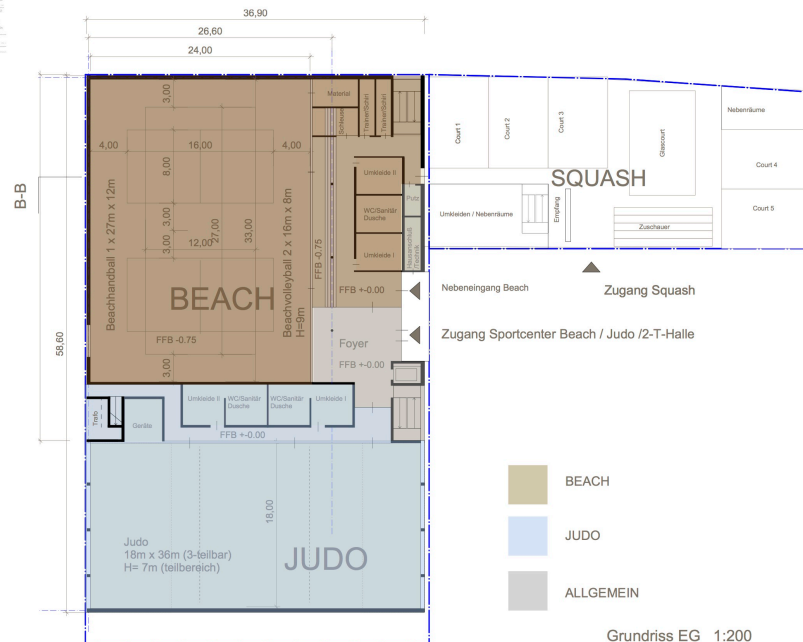
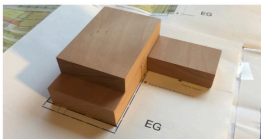


B-Plan 2016

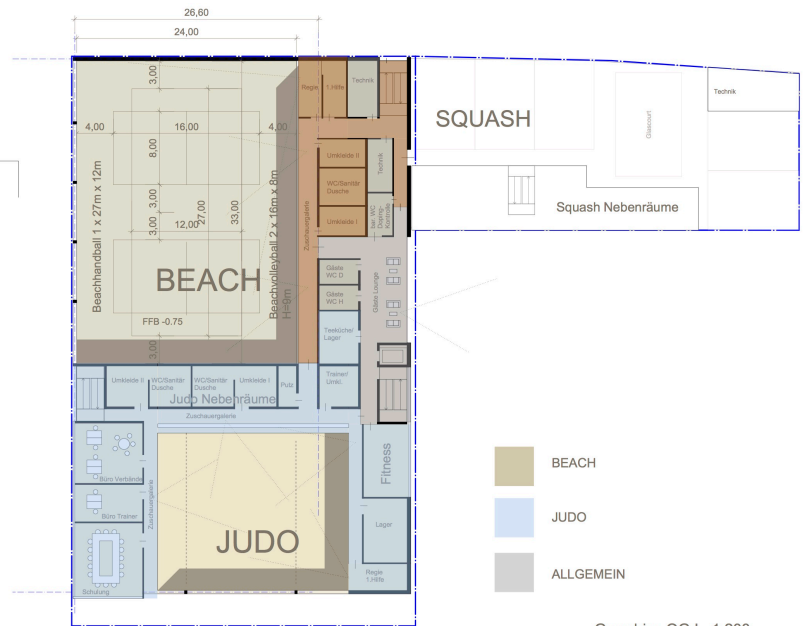
1. BA: 2T-Halle + Judo + Beach



Vollausbau:
2T-Halle + Judo + Beach + Squash



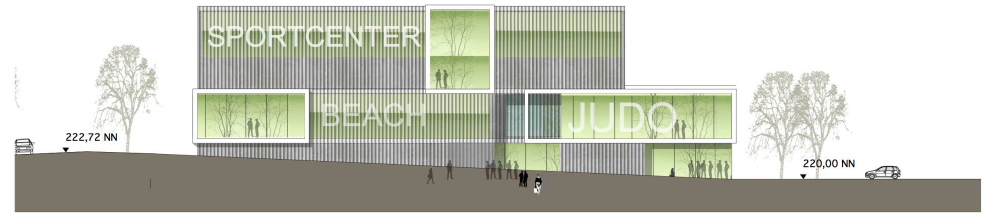
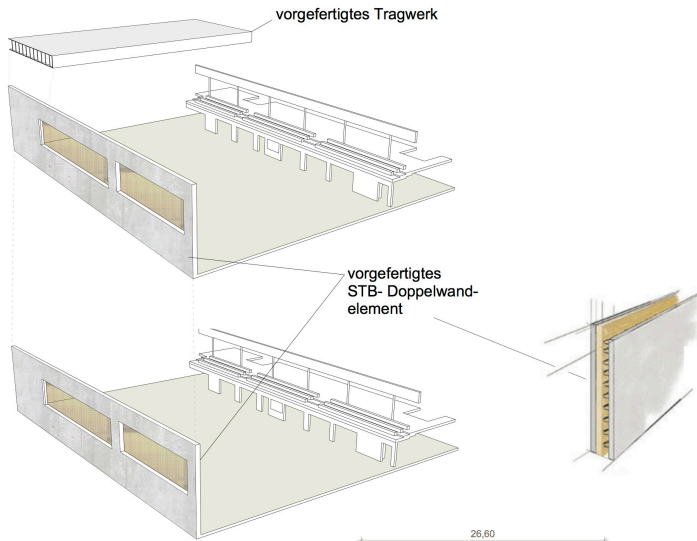
Grundriss EG 1:200



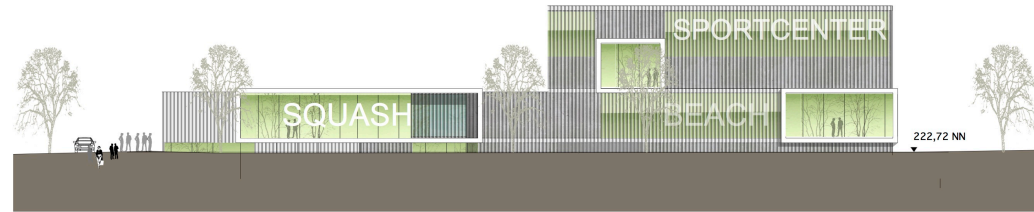
Grundriss OG I 1:200

Tragwerk:

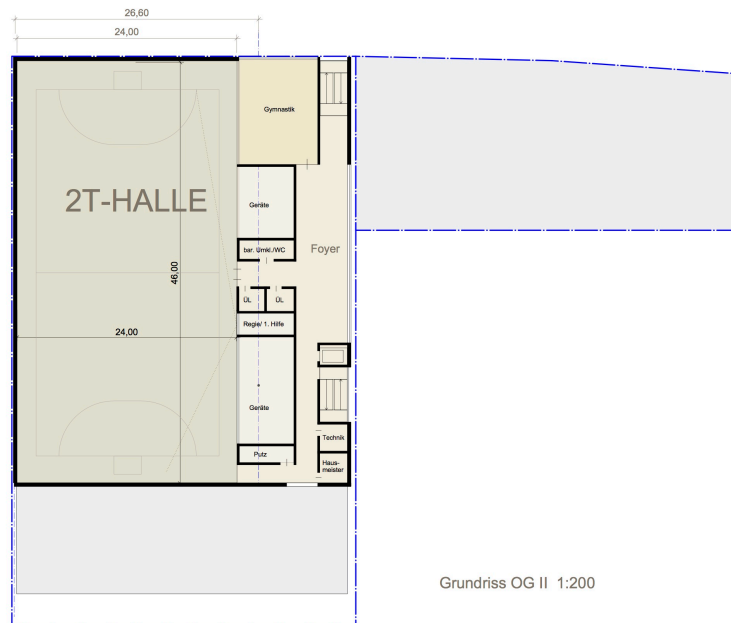
- vorgefertigte Hallen - Stahlkonstruktion
- Industriestandard
- kombiniert mit gedämmten Stahlbeton Doppelwandelementen (Nebenräume)
- wirtschaftliche Konstruktion
- schnelle Bauzeit



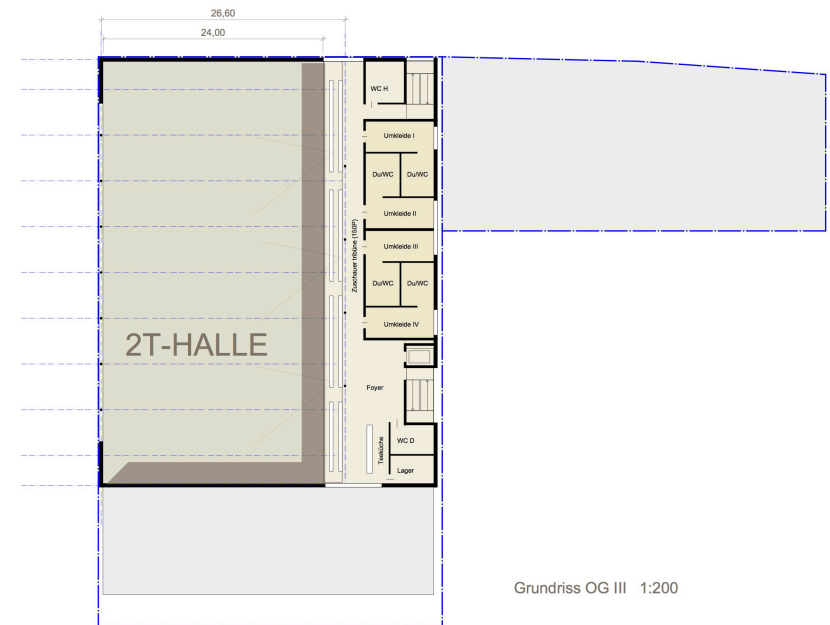
Ansicht West M 1:200



Ansicht Nord M 1:200



Grundriss OG II 1:200



Grundriss OG III 1:200