



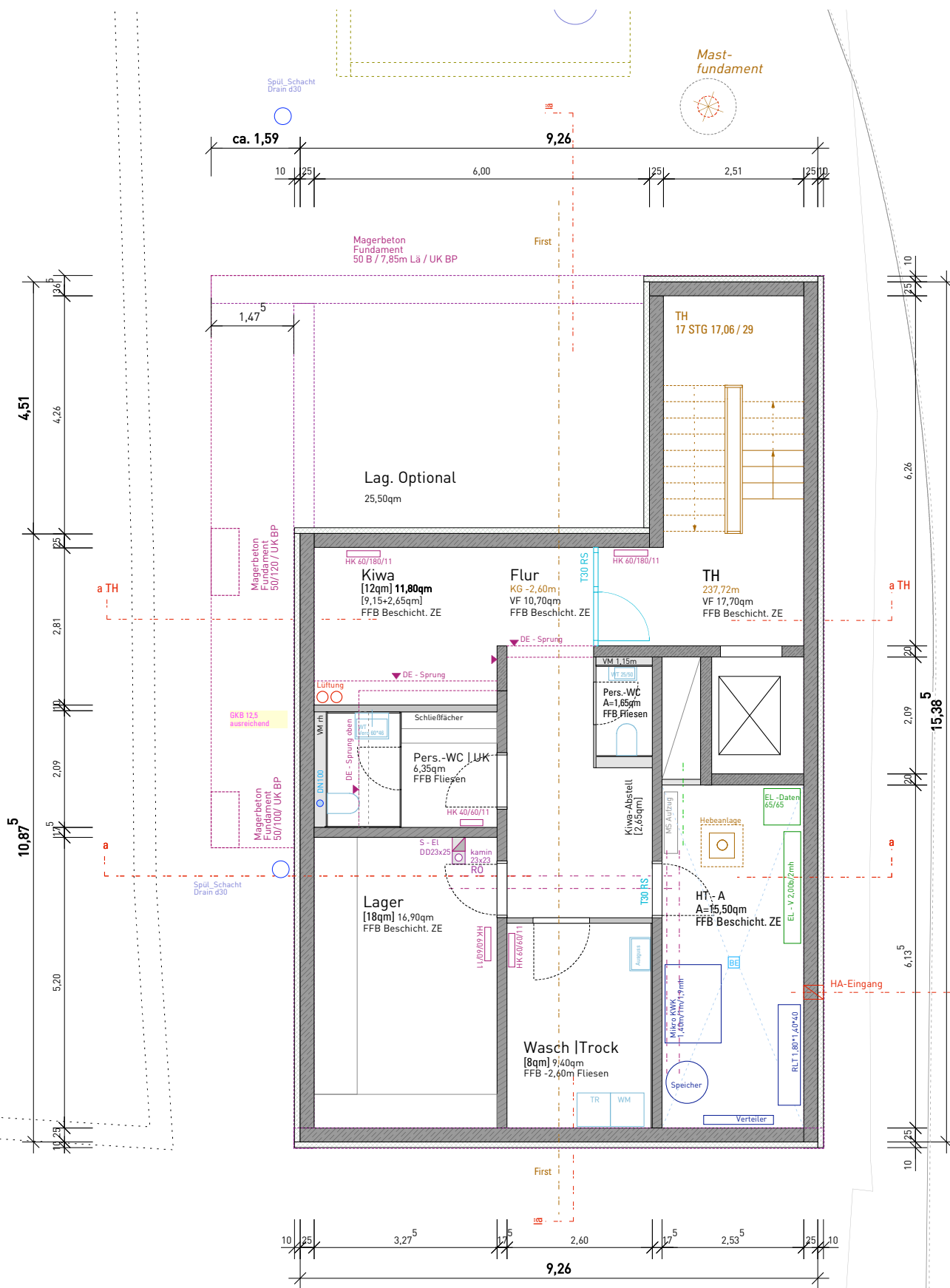
**Lageplan**  
 zeichnerischer Teil zum Bauantrag gemäß § 4 LBOWO

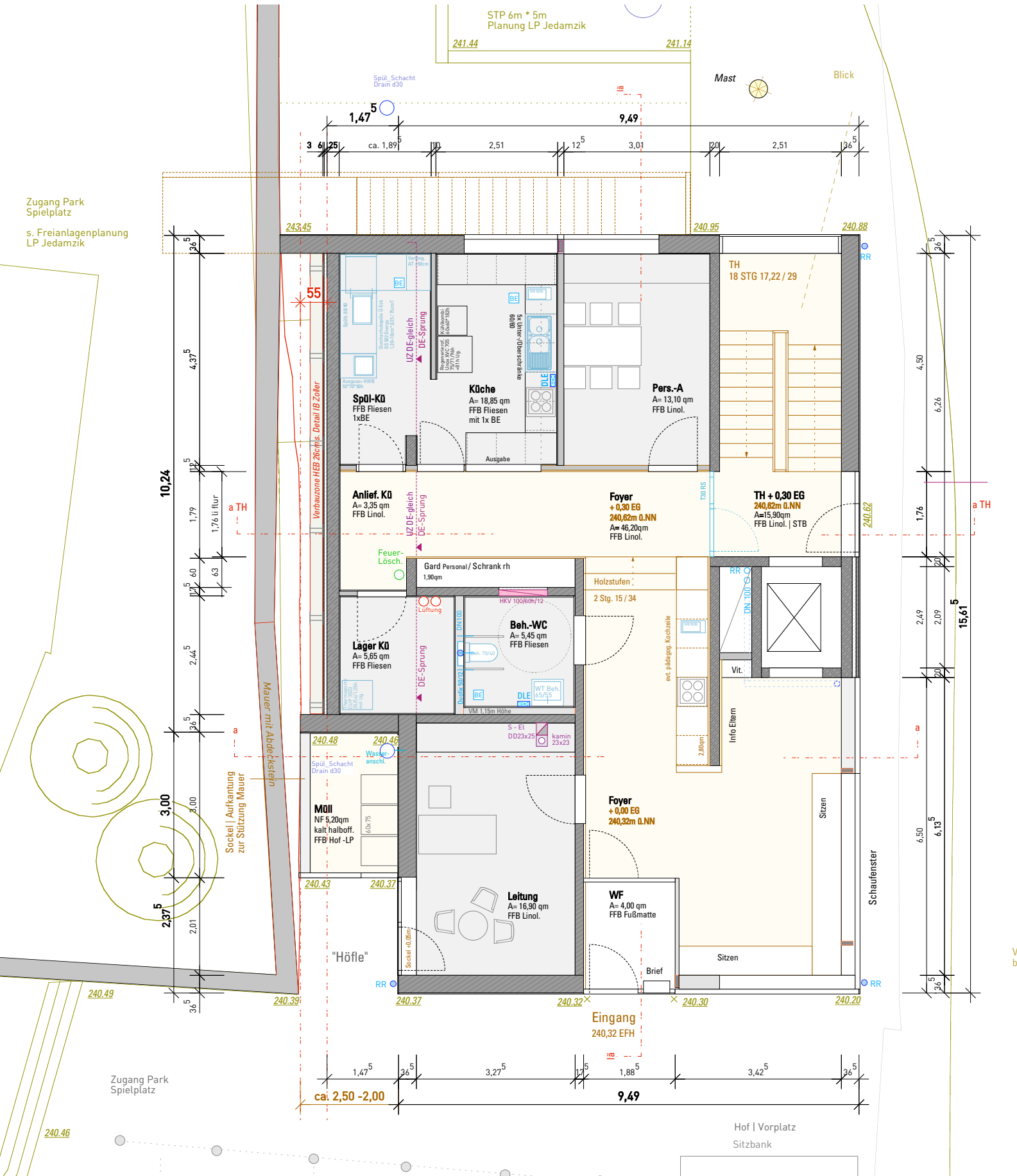
**Gemarkung Untertürkheim**  
 Landeshauptstadt Stuttgart  
 Stadtmessungsamt  
 Abteilung Vermessung

Stuttgart, den 4.03.2013

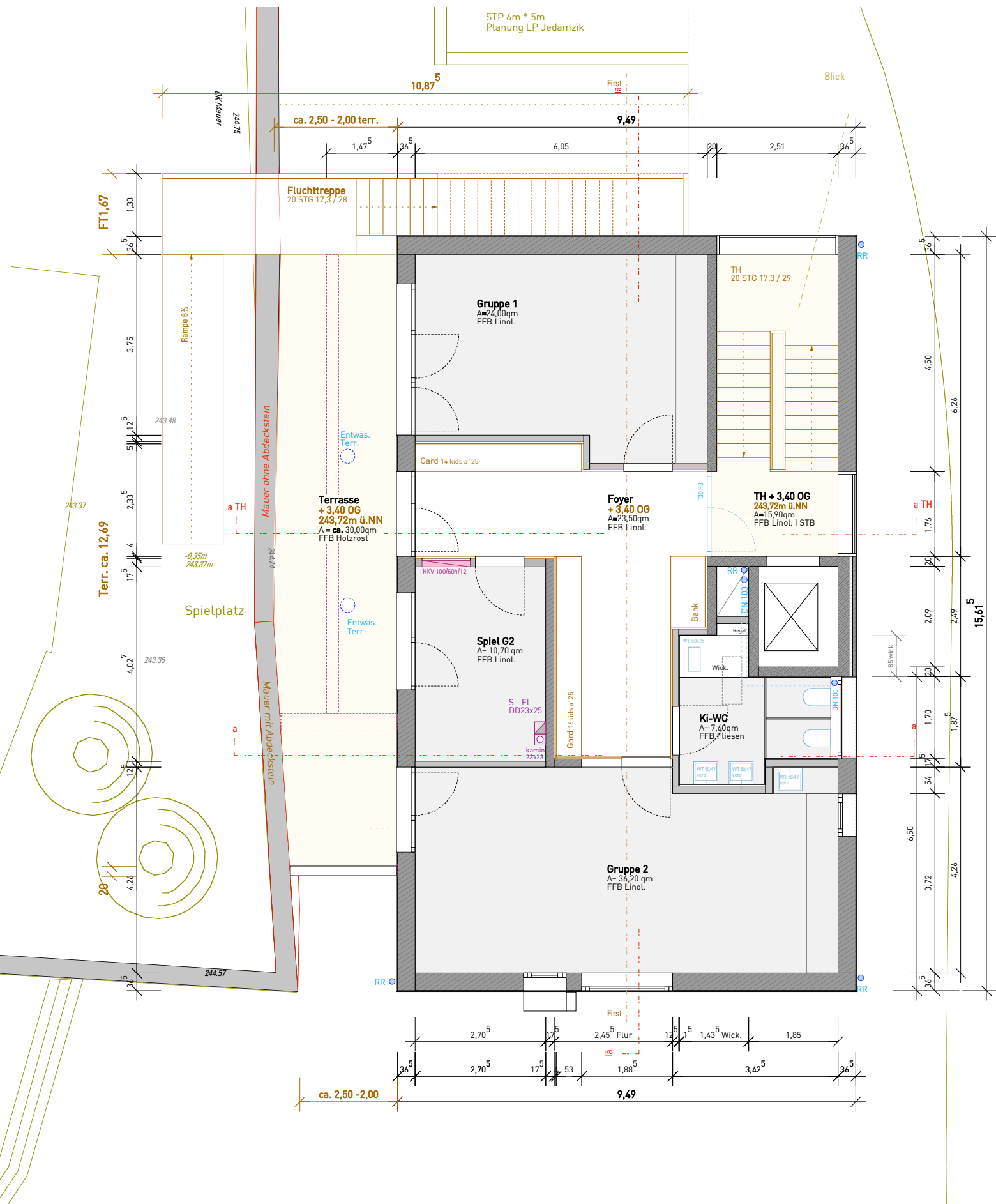
**STUTTGART**

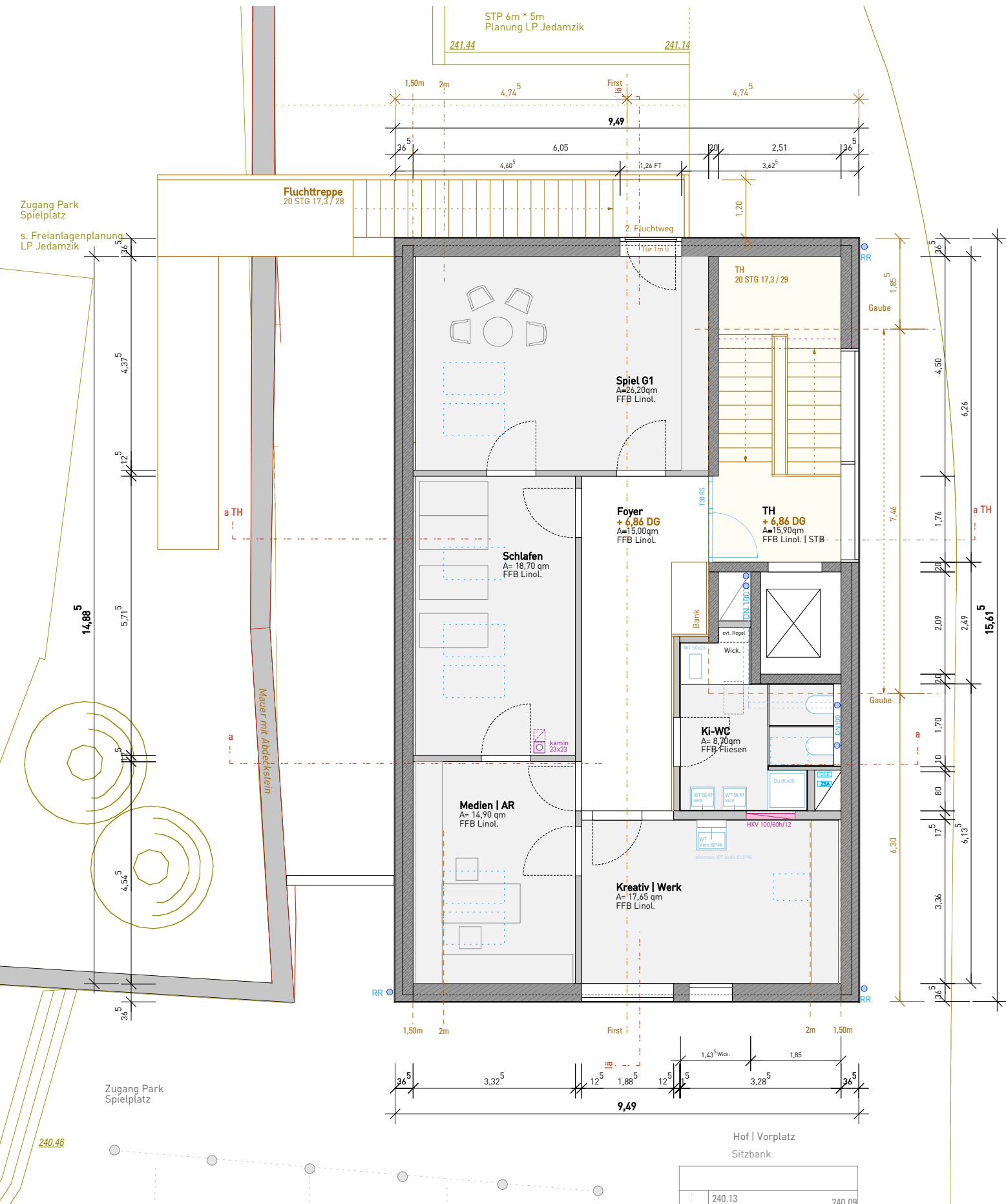
Kartengrundlage Stadtmessungsamt

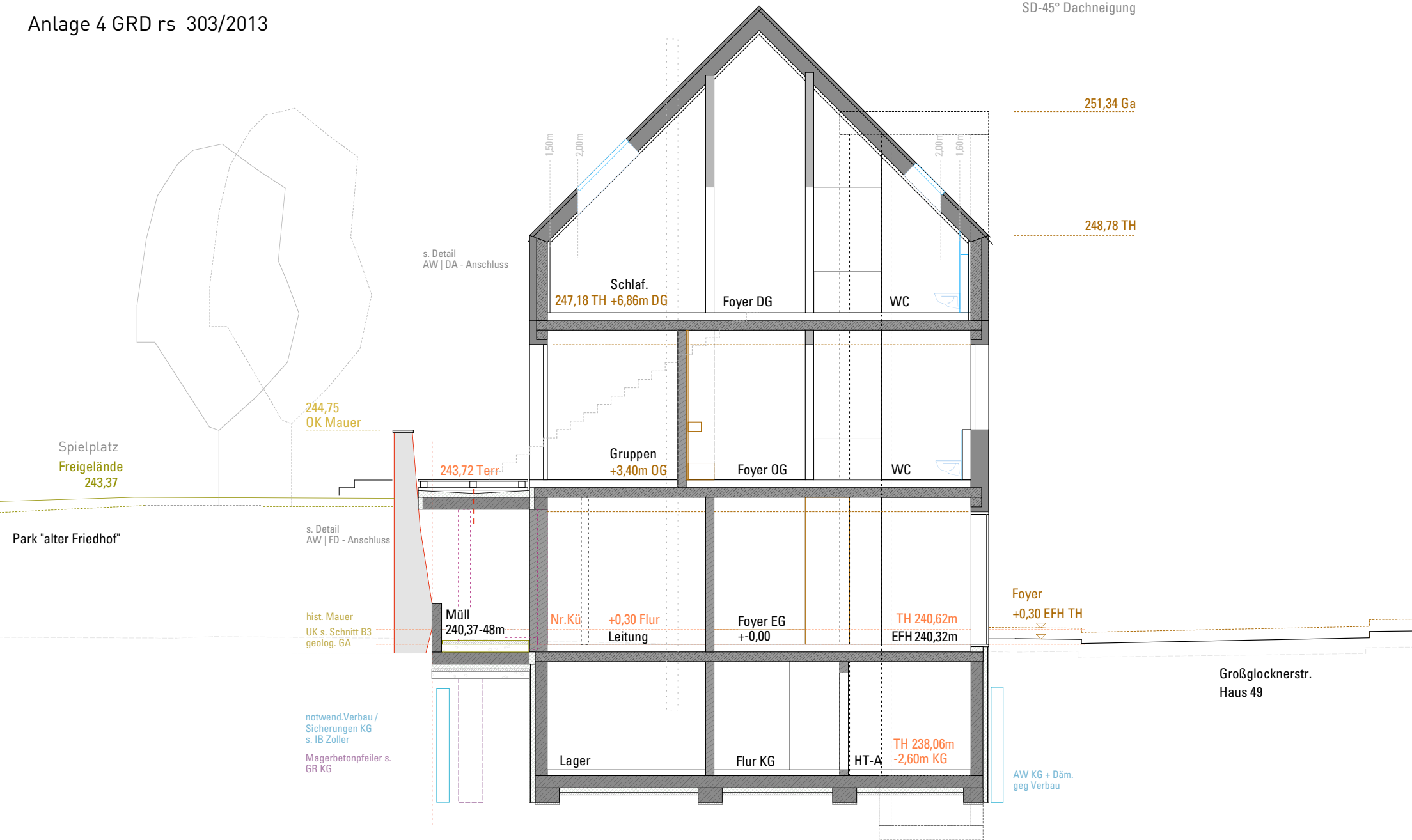


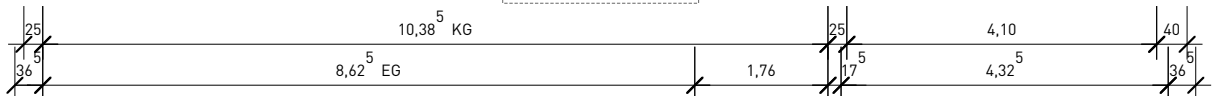
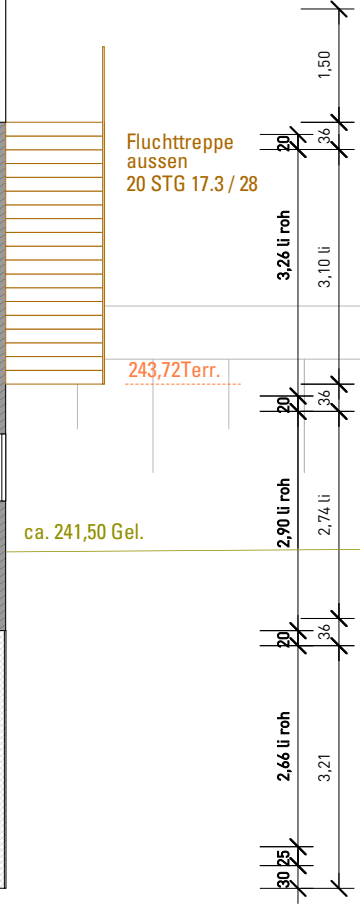
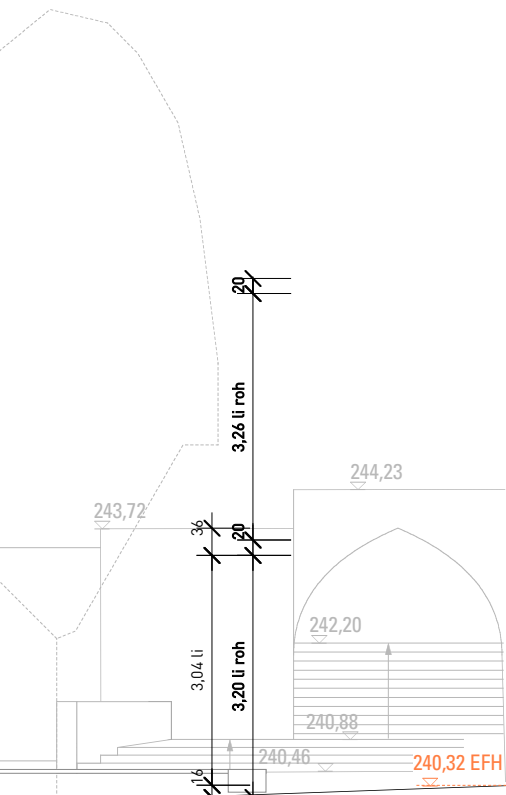


















253,52 FH  
SD - 45° Dachneigung

251,34 Gaube

248,78 TH

