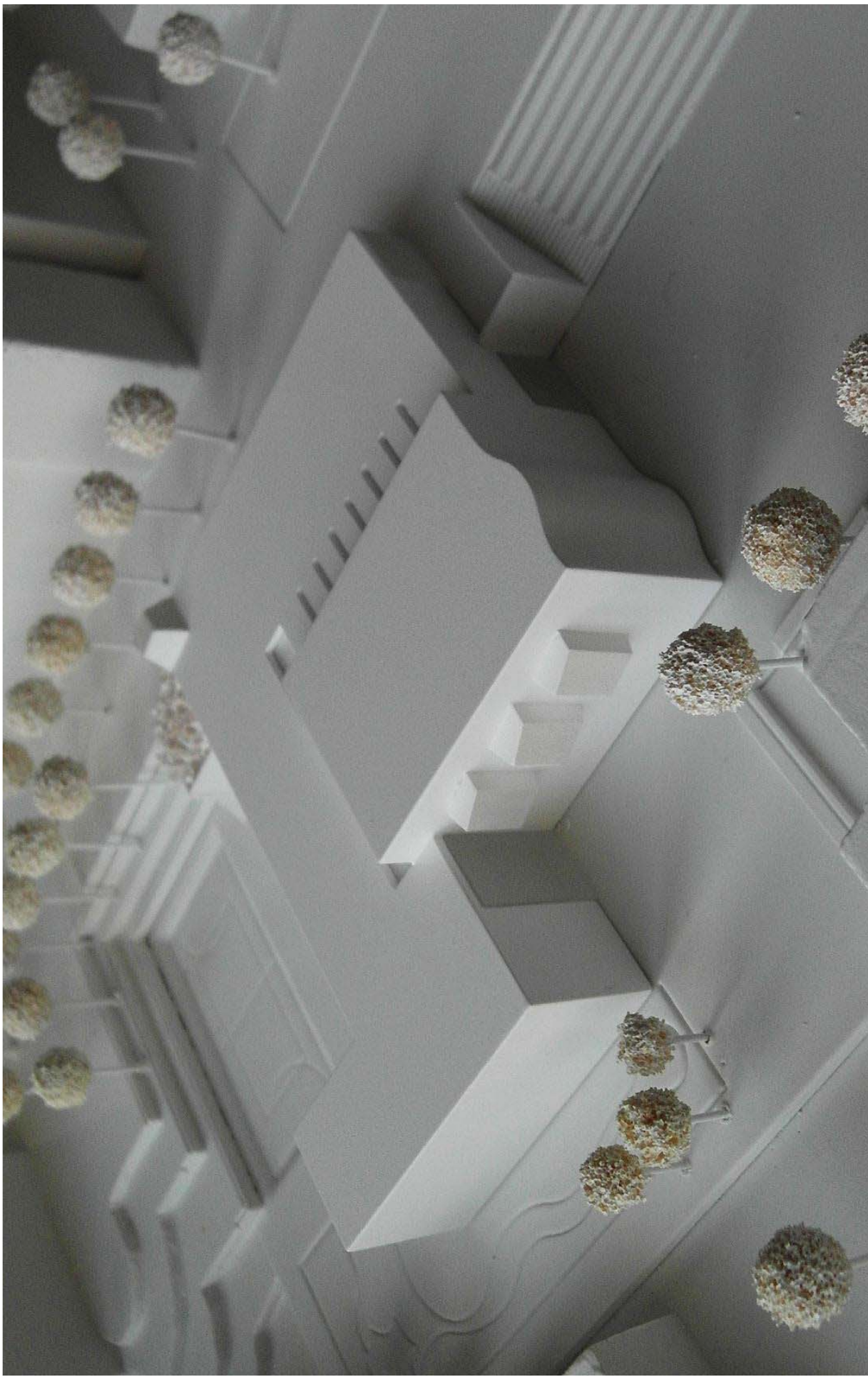


Jugend- und Bürgerhaus Flamingoweg Stuttgart - Neugereut

Präsentation Entwurfsplanung



Modell Wettbewerb

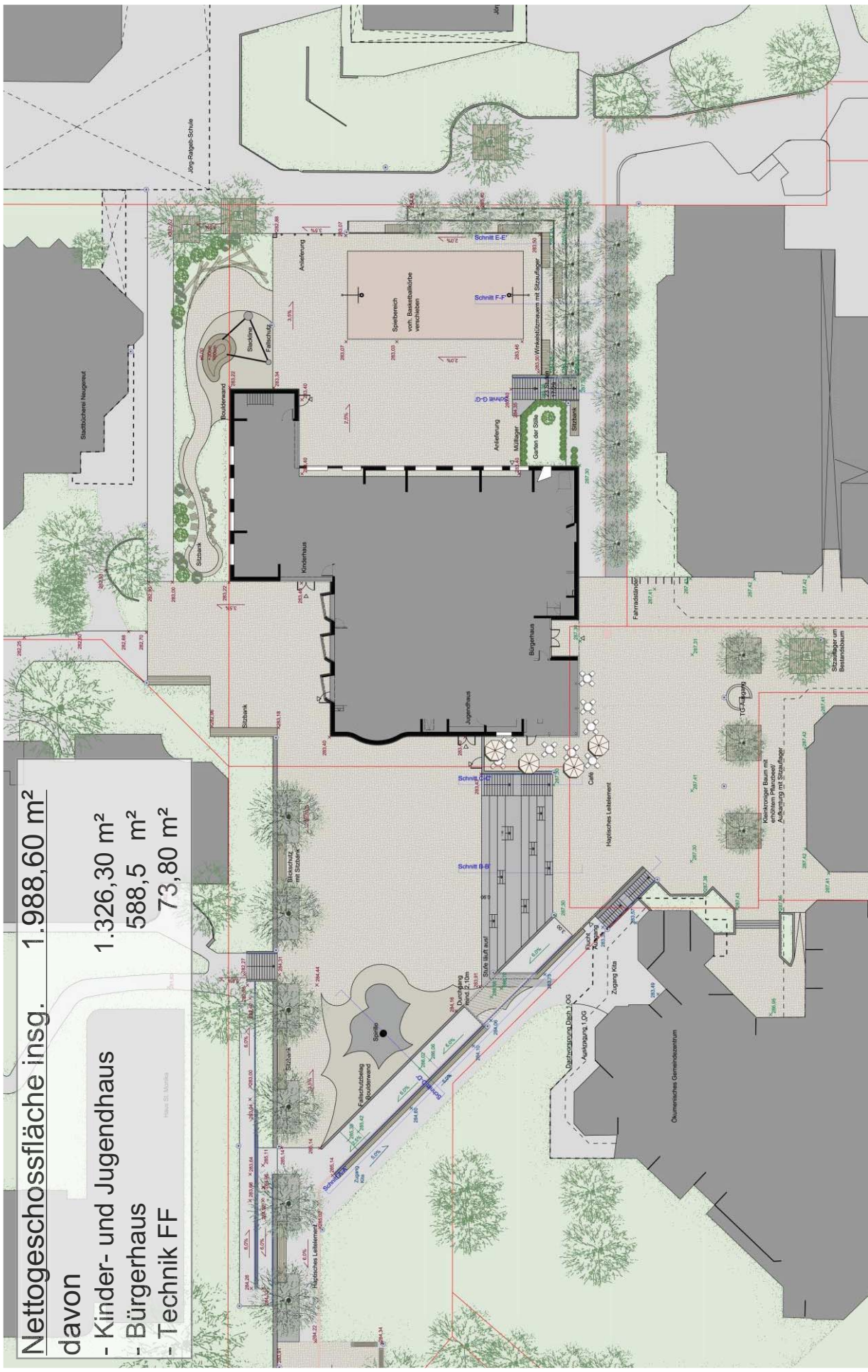


Bez + Kock Architekten Generalplaner Gesellschaft mbH

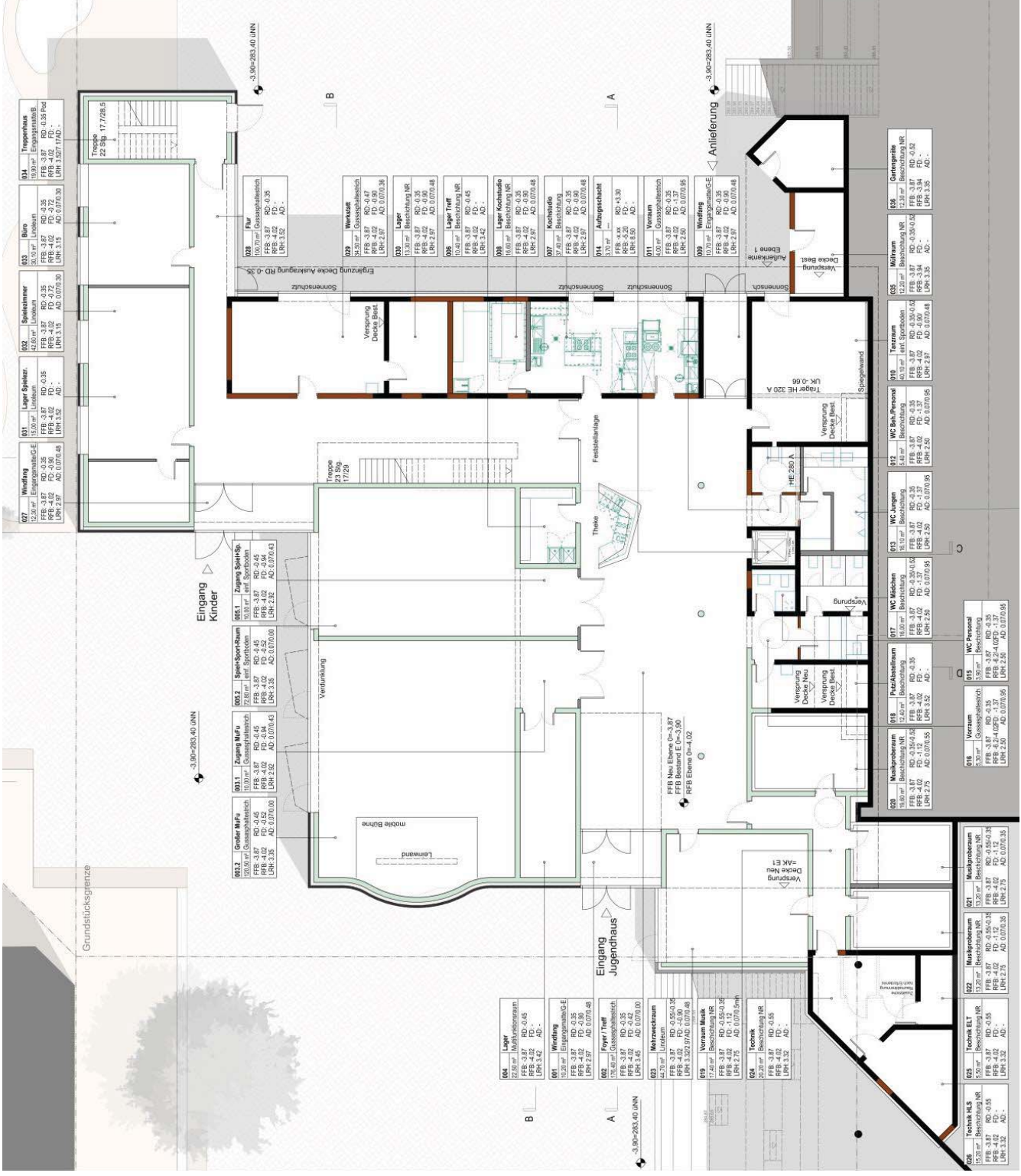
Jugend- und Bürgerhaus Flamingoweg Stuttgart Neugereut

Freianlagen

Nettogeschossfläche insg. 1.988,60 m²
 davon
 - Kinder- und Jugendhaus 1.326,30 m²
 - Bürgerhaus 588,5 m²
 - Technik FF 73,80 m²



Ebene 0

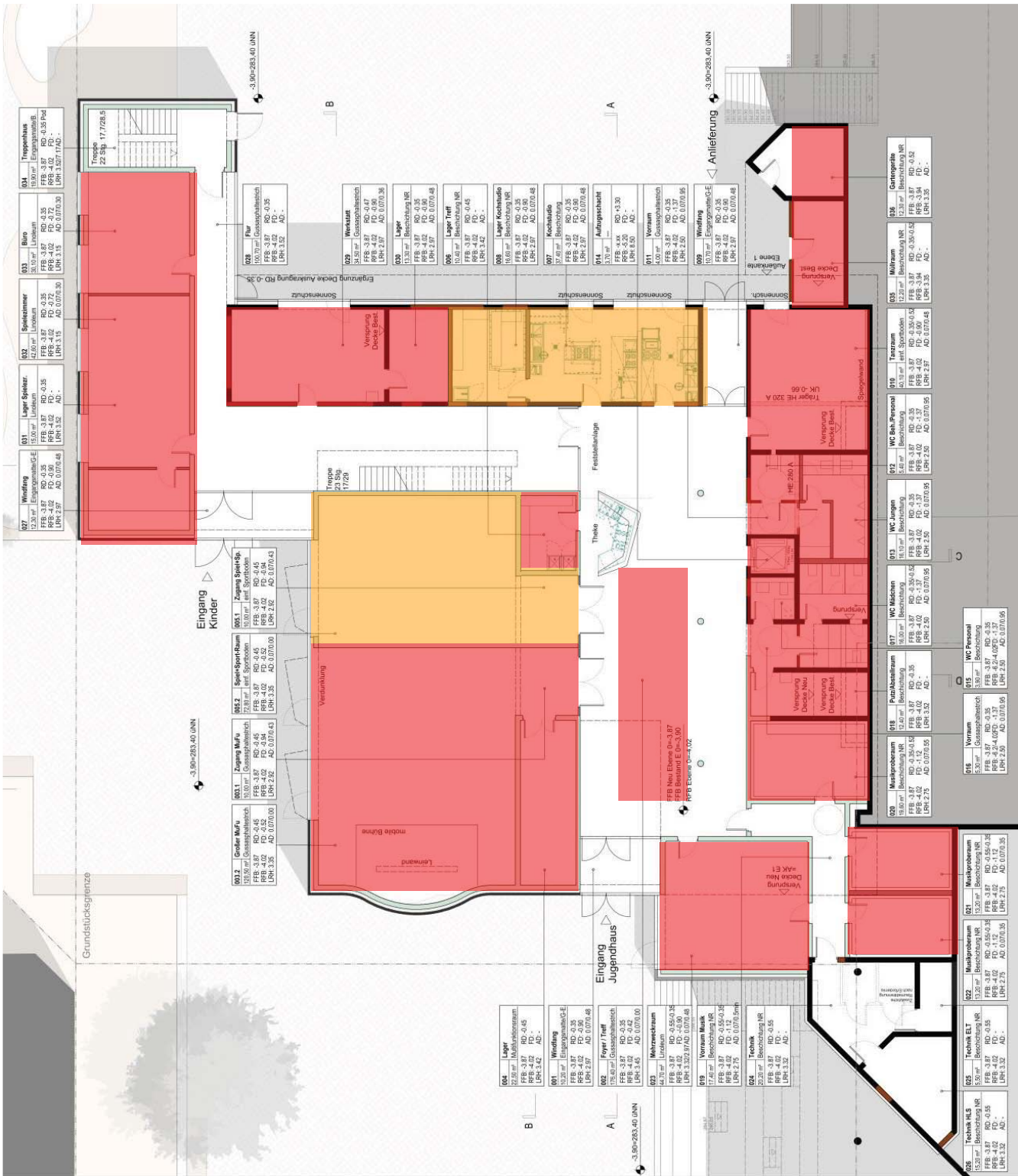


Ebene 0

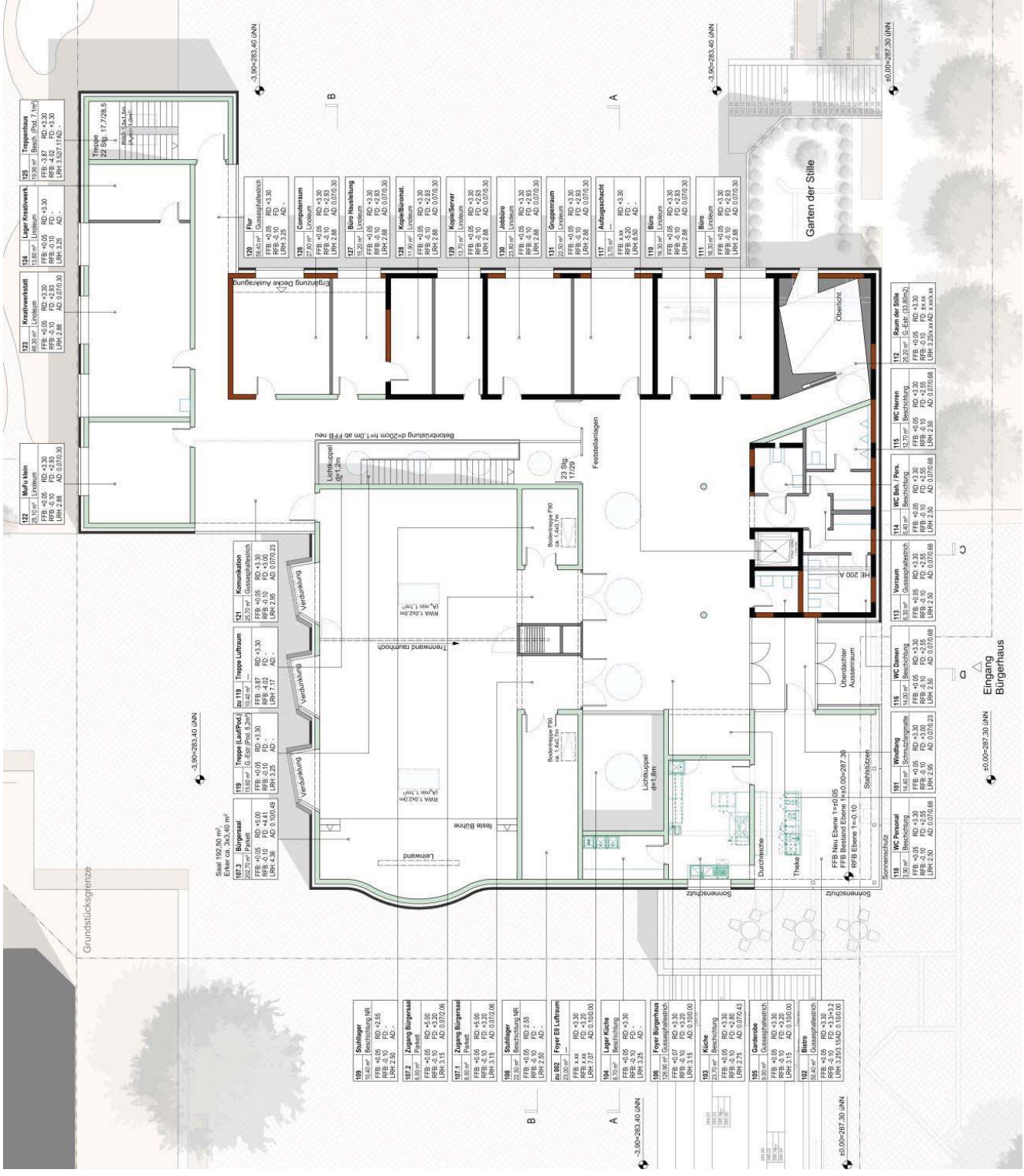
Jugendhaus

Gemeinsam

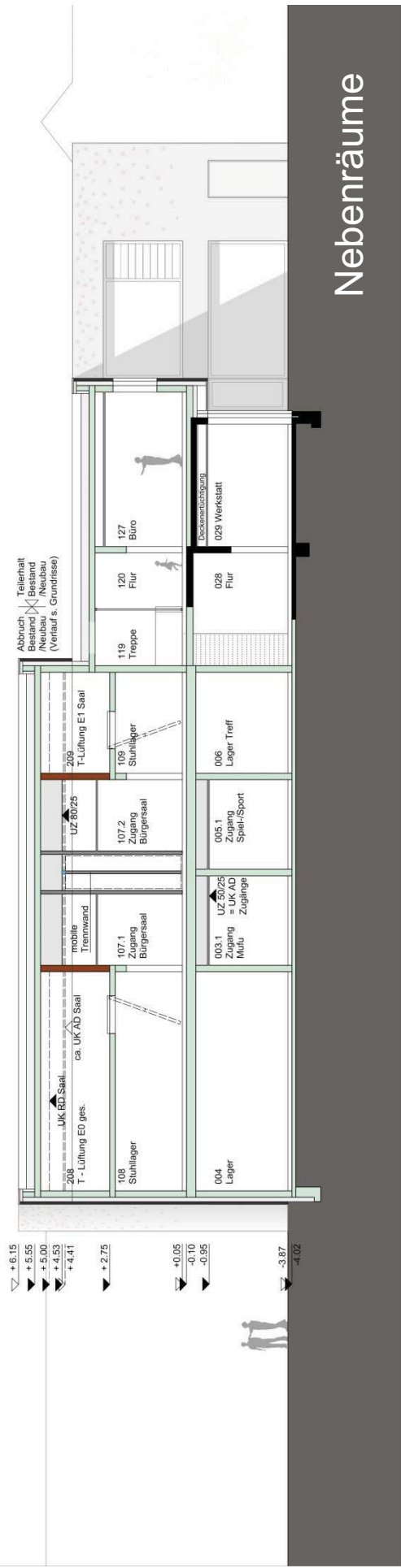
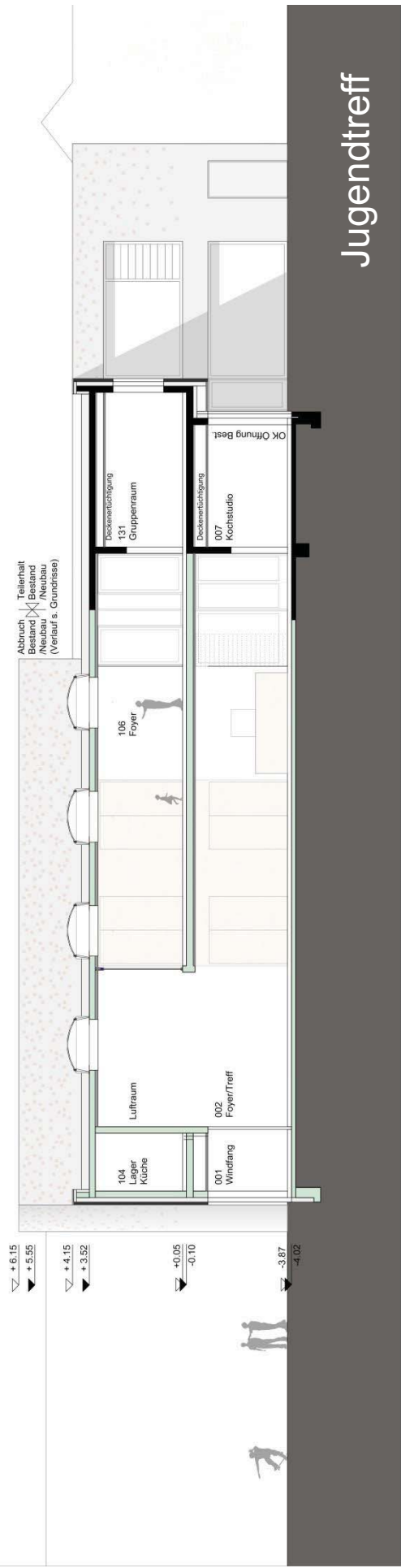
Bürgerhaus



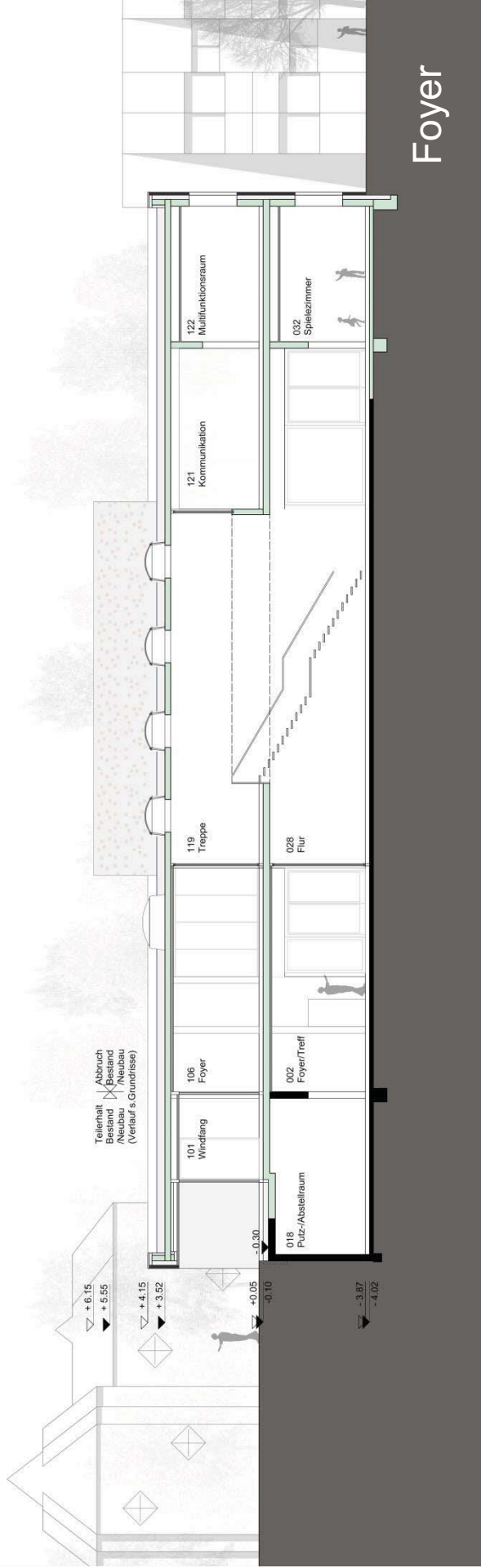
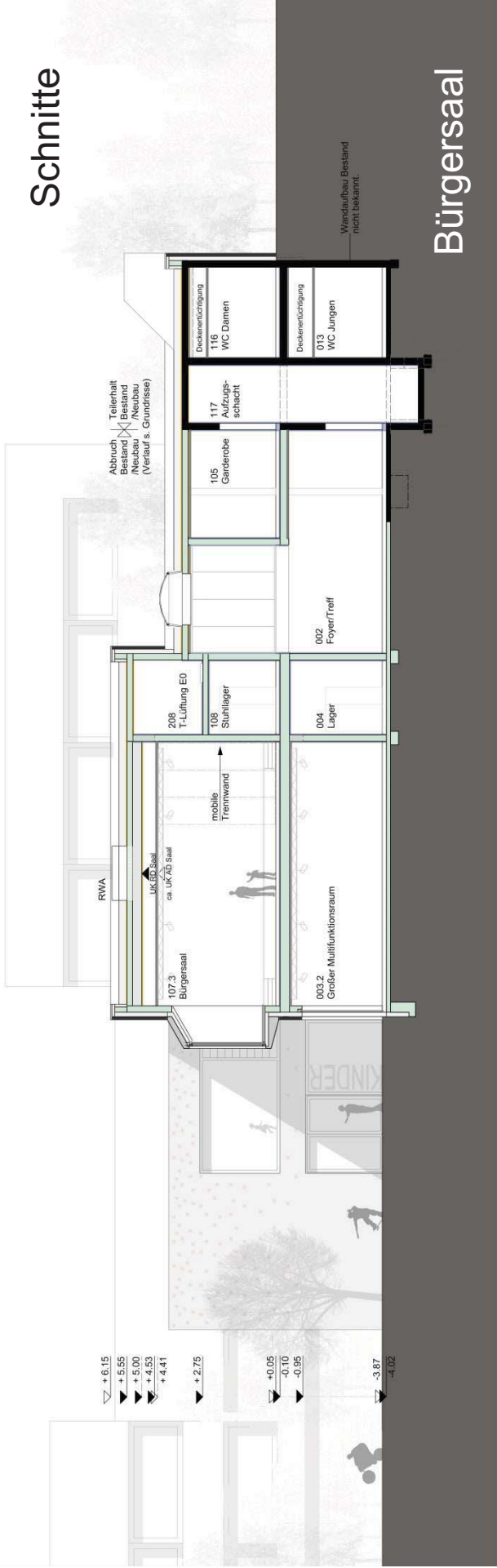
Ebene 1



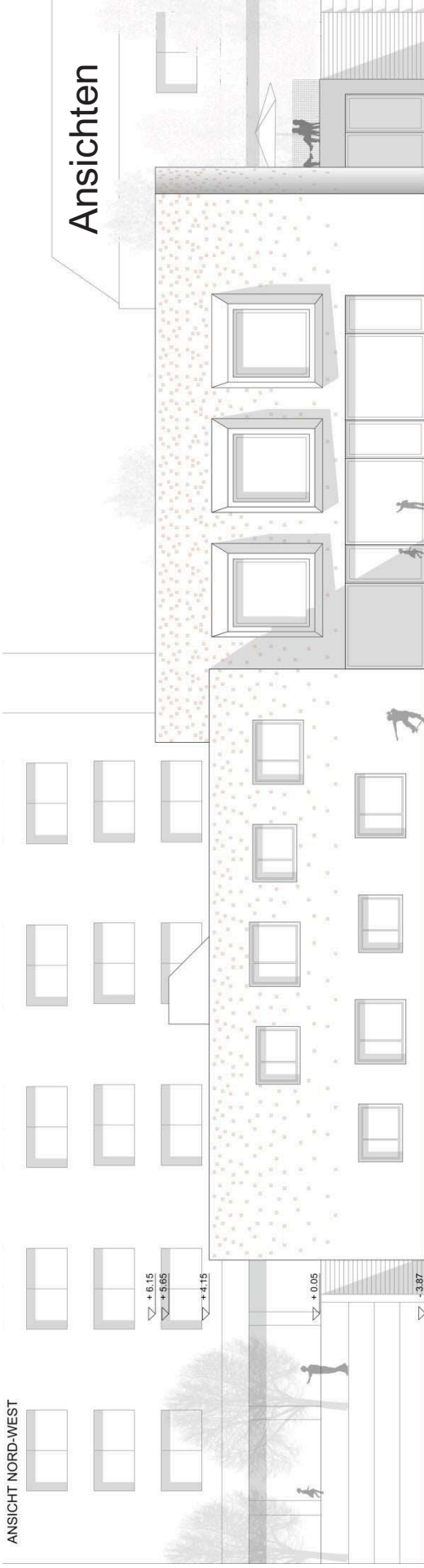
Schnitte



Schnitte



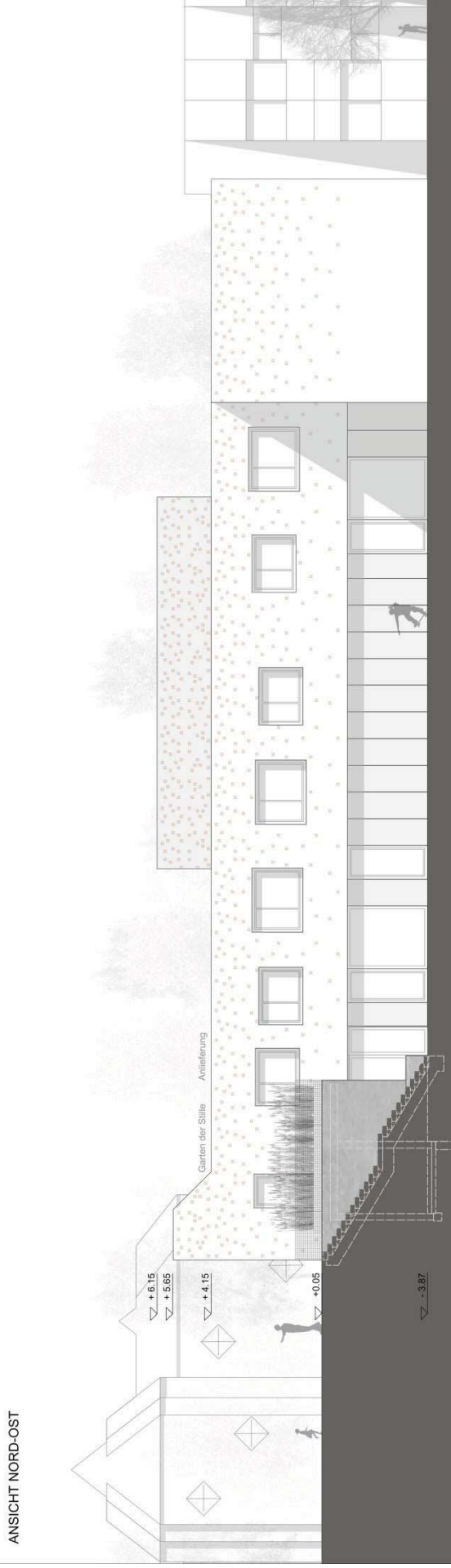
ANSICHT NORD-WEST



Ansichten

Bürgersaal

ANSICHT NORD-OST



Werkhof



Ansichten

